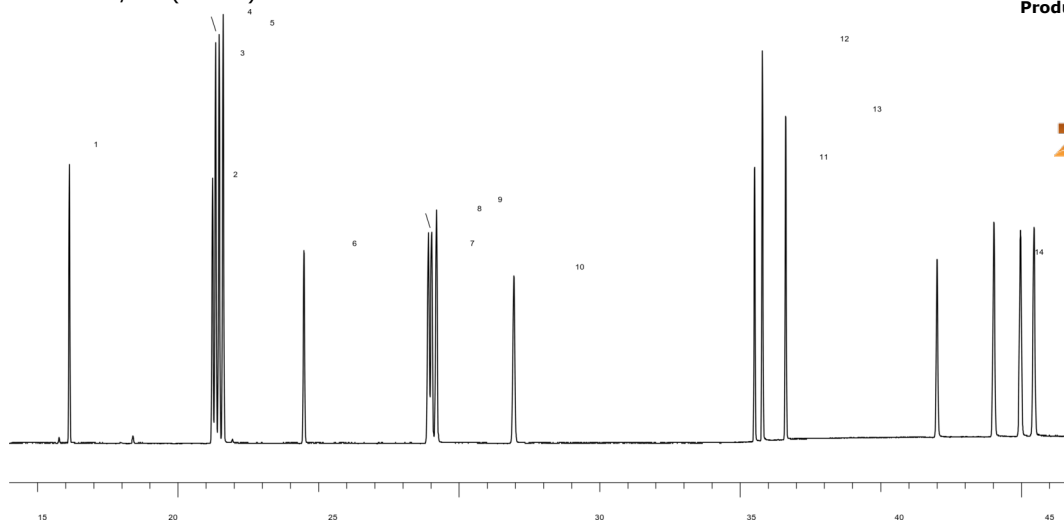


GC-MS Analysis of EU-PAH (15+1) and Triphenylene using a 40 meter Zebron ZB-PAH-CT GC column

Column: Zebron ZB-PAH-CT, GC Cap. Column 40m x 0.18mm x 0.14µm, Ea
Phase:
Dimensions: 40 meters x 0.18 mm x 0.14 µm
Order No: 7PD-G044-47
Oven Profile: 45°C for .8 min to 200°C @ 45°C/min to 265°C @ 3°C/min 265°C for 5 min to 270°C @ 1°C/min to 320°C @ 10°C/min 320°C for 15 min
Carrier Gas: Constant Pressure Helium, 78 psi
Injection: Split 30:1 1 µL @ 320°C
Detection: GC/MS (300°C)



Products used in this application:



GC-MS Analysis of EU-PAH (15+1) and Triphenylene using a 40 meter Zebron ZB-PAH-CT GC column

ANALYTES:

- 1 Benzo[c]fluorene
- 2 3. Cyclopenta[c,d]pyrene
- 3 Benz[a]anthracene
- 4 Triphenylene
- 5 Chrysene
- 6 5-Methylchrysene
- 7 Benzo[b]fluoranthene
- 8 Benzo[j]fluoranthene
- 9 Benzo[k]fluoranthene
- 10 Benzo[a]pyrene
- 11 Indeno[1,2,3-c,d]pyrene
- 12 Dibenzo[a,h]anthracene
- 13 Benzo[g,h,i]perylene
- 14 Dibenzo[a,l]pyrene
- 15 Dibenzo[a,e]pyrene
- 16 Dibenzo[a,i]pyrene
- 17 Dibenzo[a,h] pyrene

