

GC Application

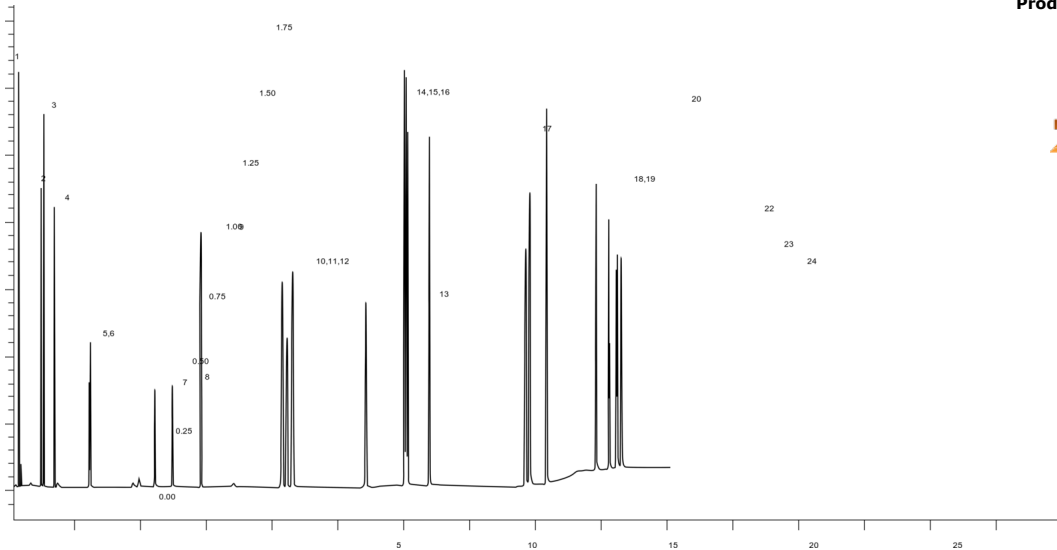
ID No.: 25721

Analysis of EU 15+1 and EPA 610 PAHs using a 20 meter Zebtron™ ZB-PAH-EU GC Column

Column: Zebtron ZB-PAH-EU, GC Cap. Column 20m, 0.18mm, 0.14um, Ea
Phase:
Dimensions: 20 meters x 0.18 mm x 0.14 µm
Order No: 7FD-G043-47
Oven Profile: 70°C for .8 min to 180°C @ 70°C/min to 230°C @ 7°C/min 230°C for 6 min to 280°C @ 40°C/min 280°C for 5 min to 335°C @ 25°C/min 335°C
Carrier Gas: Constant Flow Helium, 1.75 mL/min
Injection: Split 5:1 1 µL @ 330°C
Detection: GC/MS (300°C)



Products used in this application:



Analysis of EU 15+1 and EPA 610 PAHs using a 20 meter Zebron[™] ZB-PAH-EU GC Column

ANALYTES:

- 1 Naphthalene
- 2 Acenaphthylene
- 3 Acenaphthene
- 4 Fluorene
- 5 Phenanthrene
- 6 Anthracene
- 7 Flouranthene
- 8 Pyrene
- 9 Benzo[c]fluorene
- 10 Benzo[a]anthracene
- 11 Cyclopenta[c,d]pyrene
- 12 Chrysene
- 13 5-Methylchrysene
- 14 Benzo[b]fluoranthene
- 15 Benzo[k]fluoranthene
- 16 Benzo[j]fluoranthene
- 17 Benzo[a]pyrene
- 18 Indeno[1,2,3-cd]pyrene
- 19 Dibenz[a,h]anthracene
- 20 Benzo[g,h,i]perylene
- 21 Dibenzo[a,l]pyrene
- 22 Dibenzo[a,e]pyrene
- 23 Dibenzo[a,i]pyrene
- 24 Dibenzo[a,h]pyrene

