

# HPLC Application

ID No.: 25725

## Organic Acids on Luna Omega Polar 3u 150x4.6mm

**Column:** Luna<sup>®</sup> Omega 3  $\mu$ m Polar C18 100 Å, LC Column 150 x 4.6 mm, Ea

**Dimensions:** 150 x 4.6 mm ID

**Order No:** 00F-4760-E0

**Elution Type:** Isocratic

**Eluent A:** 100mM Potassium Phosphate Monobasic pH 2.5

Gradient	Step No.	Time (min)	Pct A
<b>Profile:</b>	<b>1</b>	10	100

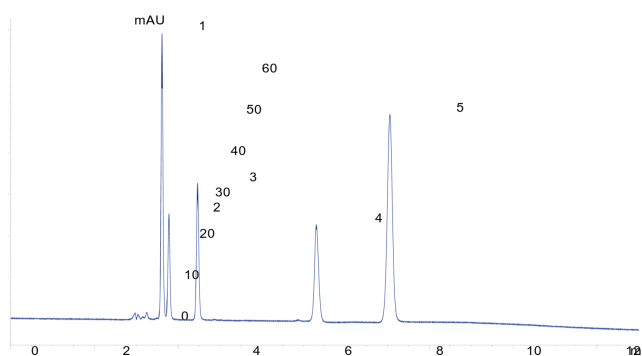
**Flow Rate:** 0.5 mL/min

**Col. Temp.:** 35 °C

**Detection:** LC/UV (DAD, PDA) @ 226.000000000 nm (nanometers) (ambient)



Products used in this application:



### ANALYTES:

- 1** Tartaric acid  
Retention Time: 3.614 min
- 2** Quinic acid  
Retention Time: 3.78 min
- 3** Malic acid  
Retention Time: 4.464 min
- 4** Citric acid  
Retention Time: 7.3 min
- 5** Fumaric acid  
Retention Time: 9.056 min

