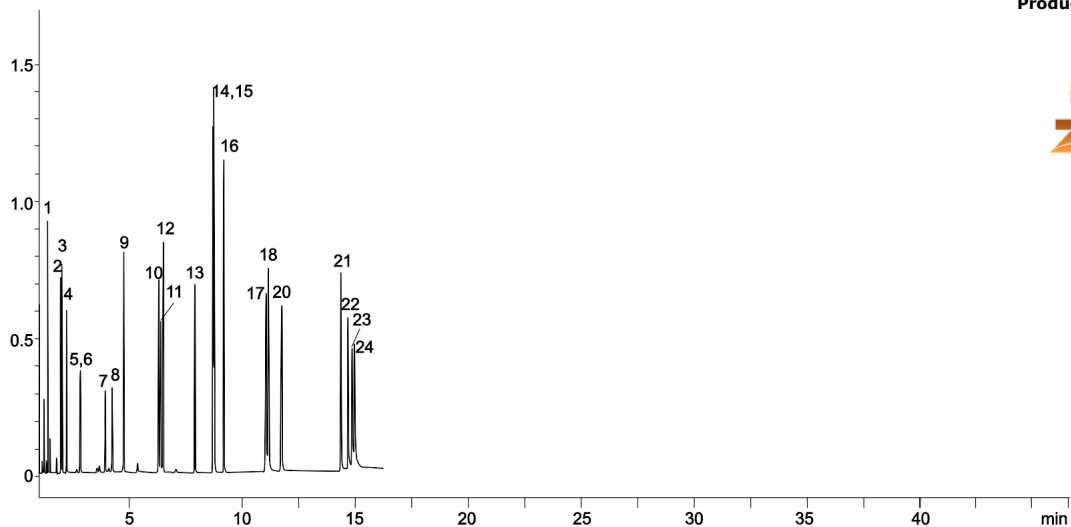


Analysis of EU 15+1 and EPA 610 using a 10 meter Zebron™ ZB-PAH-EU GC column

Column: Zebron ZB-PAH-EU, GC Cap. Column 10mx 0.10mm, 0.08µm, Ea
Phase:
Dimensions: 10 meters x 0.1 mm x 0.08 µm
Order No: 7CB-G043-59
Oven Profile: 70°C for .4 min to 180°C @ 140°C/min to 230°C @ 14°C/min 230°C for 3 min to 280°C @ 85°C/min 280°C for 5 min to 330°C @ 40°C/min 330°C
Carrier Gas: Constant Flow Helium, 0.88 mL/min
Injection: Split 15:1 1 µL @ 320°C
Detection: GC/MS (300°C)



Products used in this application:



Analysis of EU 15+1 and EPA 610 using a 10 meter Zebron[™] ZB-PAH-EU GC column

ANALYTES:

- 1 Naphthalene
- 2 Acenaphthylene
- 3 Acenaphthene
- 4 Fluorene
- 5 Phenanthrene
- 6 Anthracene
- 7 Flouranthene
- 8 Pyrene
- 9 Benzo[c]fluorene
- 10 Benzo[a]anthracene
- 11 Cyclopenta[c,d]pyrene
- 12 Chrysene
- 13 5-Methylchrysene
- 14 Benzo[b]fluoranthene
- 15 Benzo[k]fluoranthene
- 16 Benzo[j]fluoranthene
- 17 Benzo[a]pyrene
- 18 Indeno[1,2,3-cd]pyrene
- 19 Dibenz[a,h]anthracene
- 20 Benzo[g,h,i]perylene
- 21 Dibenzo[a,l]pyrene
- 22 Dibenzo[a,e]pyrene
- 23 Dibenzo[a,i]pyrene
- 24 Dibenzo[a,h]pyrene

