

# HPLC Application

ID No.: 25736

## Organic Acids on Luna Omega Polar 3 $\mu$ m C18 250 x 4.6mm

**Column:** Luna Omega 5u Polar C18 100A, LC Column 250 x 4.6 mm, Ea

**Dimensions:** 250 x 4.6 mm ID

**Order No:** 00G-4754-E0

**Elution Type:** Isocratic

**Eluent A:** 100mM Potassium Phosphate Monobasic pH 2.5

Gradient	Step No.	Time (min)	Pct A
Profile:	1	10	100

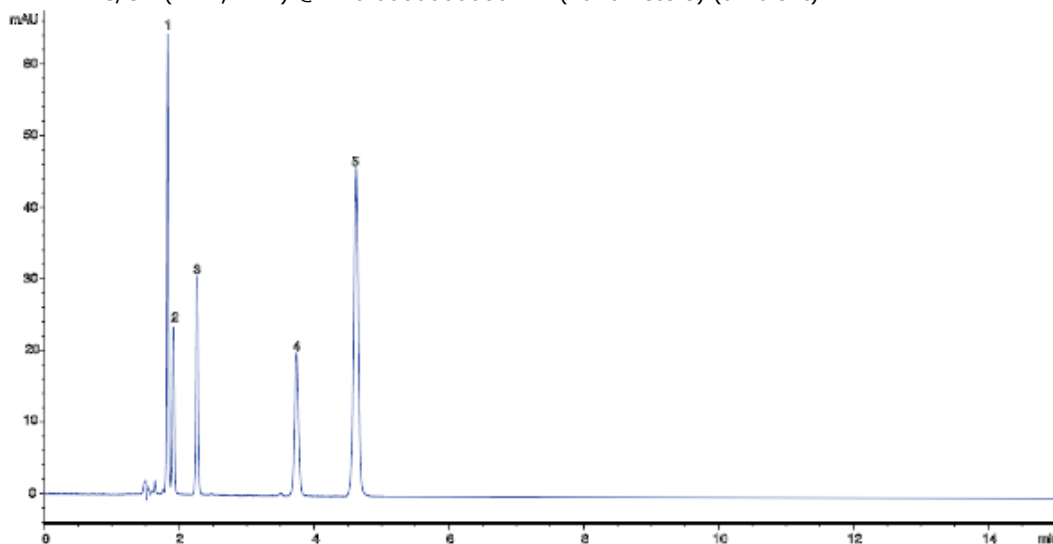
**Flow Rate:** 1 mL/min

**Col. Temp.:** 35 °C

**Detection:** LC/UV (DAD, PDA) @ 226.000000000 nm (nanometers) (ambient)



Products used in this application:



### ANALYTES:

- 1** Tartaric acid  
Retention Time: 1.827 min
- 2** Quinic acid  
Retention Time: 1.912 min
- 3** Malic acid  
Retention Time: 2.262 min
- 4** Citric acid  
Retention Time: 3.737 min
- 5** Fumaric acid  
Retention Time: 4.622 min

