

## GC-MS Analysis of PAH, PCB and Terphenyl using a 30 meter Zebron ZB-PAH-EU GC column

**Column:** Zebron ZB-PAH-EU, GC Cap. Column 30m, 0.25mm, 0.20  $\mu$ m, Ea

**Phase:**

**Dimensions:** 30 meters x 0.25 mm x 0.2  $\mu$ m

**Order No:** 7HG-G043-10

**Oven Profile:** °C for 1 min °C for 5 min °C for 10 min

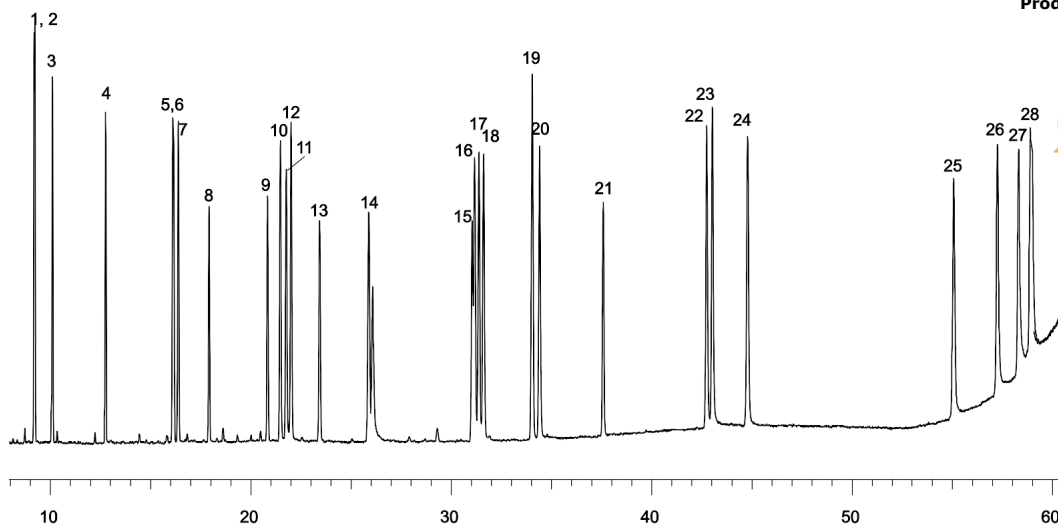
**Carrier Gas:** Constant Pressure Helium, 72.8 kPa

**Injection:** Split 2:1 1  $\mu$ L @ 320°C

**Detection:** GC/MS (300°C)



Products used in this application:



## GC-MS Analysis of PAH, PCB and Terphenyl using a 30 meter Zebron ZB-PAH-EU GC column

### ANALYTES:

- 1 PCB 31
- 2 PCB 28
- 3 PCB-52
- 4 PCB 101
- 5 PCB 153
- 6 PCB118
- 7 Benzo[c]fluorene
- 8 PCB138
- 9 PCB180
- 10 Benz[a]anthracene
- 11 Cyclopenta[c,d]pyrene
- 12 Chrysene
- 13 Trichlorotriphenylene
- 14 5-Methylchrysene
- 15 Tetrachloroterphenylene
- 16 Benzo[b]fluoranthene
- 17 Benzo[k]fluoranthene
- 18 Benzo[j]fluoranthene
- 19 Benzo[e]pyrene
- 20 Benzo[a]pyrene
- 21 Pentachloroterphenylene
- 22 Indeno[1,2,3-cd]pyrene
- 23 Dibenzo[a,h]anthracene
- 24 Benzo[g,h,i]perylene
- 25 Dibenzo[a,l]pyrene
- 26 Dibenzo[a,e]pyrene
- 27 Dibenzo[a,i]pyrene
- 28 Dibenzo[a,lh]pyrene

