

HPLC Application

ID No.: 25754

Organic Acids on Luna Omega Polar 3u 150x4.6mm - 1.5 ml/min

Column: Luna® Omega 3 µm Polar C18 100 Å, LC Column 150 x 4.6 mm, Ea

Dimensions: 150 x 4.6 mm ID

Order No: 00F-4760-E0

Elution Type: Isocratic

Eluent A: 100mM Potassium Phosphate Monobasic pH 2.5

Gradient	Step No.	Time (min)	Pct A
Profile:	1	10	100

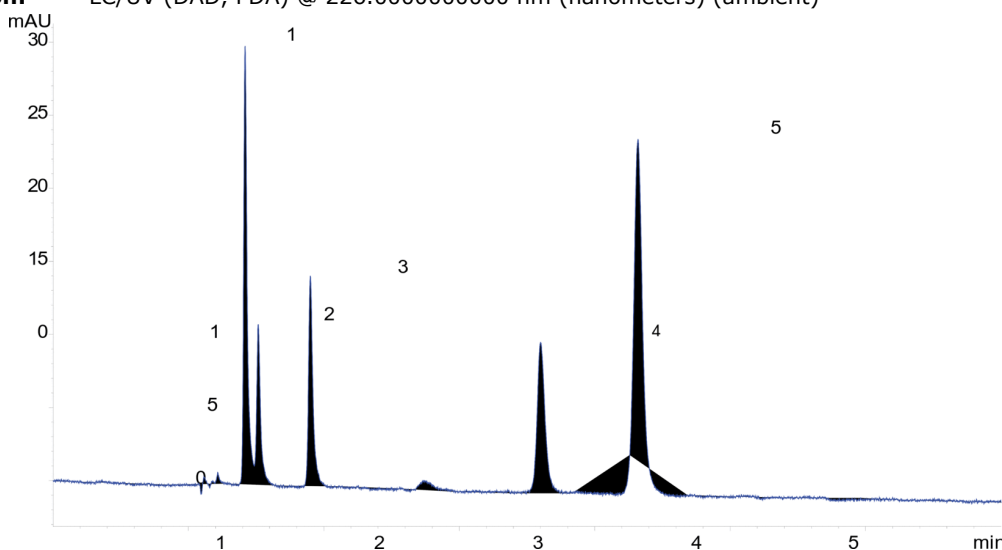
Flow Rate: 1.5 mL/min

Col. Temp.: 35 °C

Detection: LC/UV (DAD, PDA) @ 226.000000000 nm (nanometers) (ambient)



Products used in this application:



ANALYTES:

- 1** Tartaric acid
Retention Time: 1.827 min
- 2** Quinic acid
Retention Time: 1.912 min
- 3** Malic acid
Retention Time: 2.262 min
- 4** Citric acid
Retention Time: 3.737 min
- 5** Fumaric acid
Retention Time: 4.622 min

