

HPLC Application

ID No.: 2580

Food Coloring

Column: Luna[®] 5 μ m C18(2) 100 Å, LC Column 150 x 4.6 mm, Ea

Dimensions: 150 x 4.6 mm ID

Order No: 00F-4252-E0

Elution Type: Isocratic

Eluent A: 5 mM TBA Phosphate buffer pH 7.0

Eluent B: Methanol

| Gradient Profile: | Step No. | Time (min) | Pct A | Pct B |
|-------------------|----------|------------|-------|-------|
| | 1 | 0 | 55 | 45 |

Flow Rate: 0.5 mL/min

Col. Temp.: ambient

Detection: UV-Vis Abs.-Variable Wave.(UV) @ 630/610/502/428/484 nm (ambient)

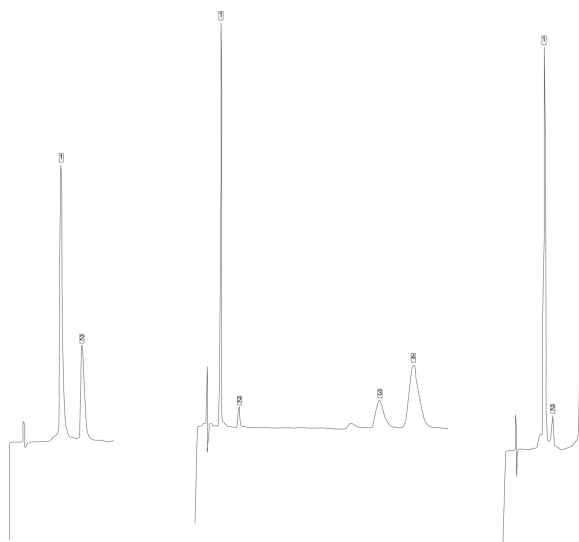
Analyst Note: SecurityGuard[™] Guard Cartridge System extends column lifetime.

- SecurityGuard Cartridges, C18 4 x 3.0mm, 10/Pk Part No.: AJ0-4287

- Holder Part No.: KJ0-4282



Products used in this application:



ANALYTES:

- 1 Yellow 5, FDC
- 2 Yellow 6, FDC
- 3 Blue 2, FDC
- 4 impurity
- 5 impurity
- 6 Blue 1, FDC
- 7 Red 2, FDC
- 8 Red 4, FDC
- 9 Red 40, FDC

