

HPLC Application

ID No.: 25817

Intact Reversed Phase Analysis of Infliximab-Temperature Effect Optimization

Column: bioZen[™] 2.6 µm WidePore C4, LC Column 100 x 2.1 mm, Ea

Dimensions: 100 x 2.1 mm ID

Order No: 00D-4786-AN

Elution Type: Gradient

Eluent A: 0.1% TFA in Water

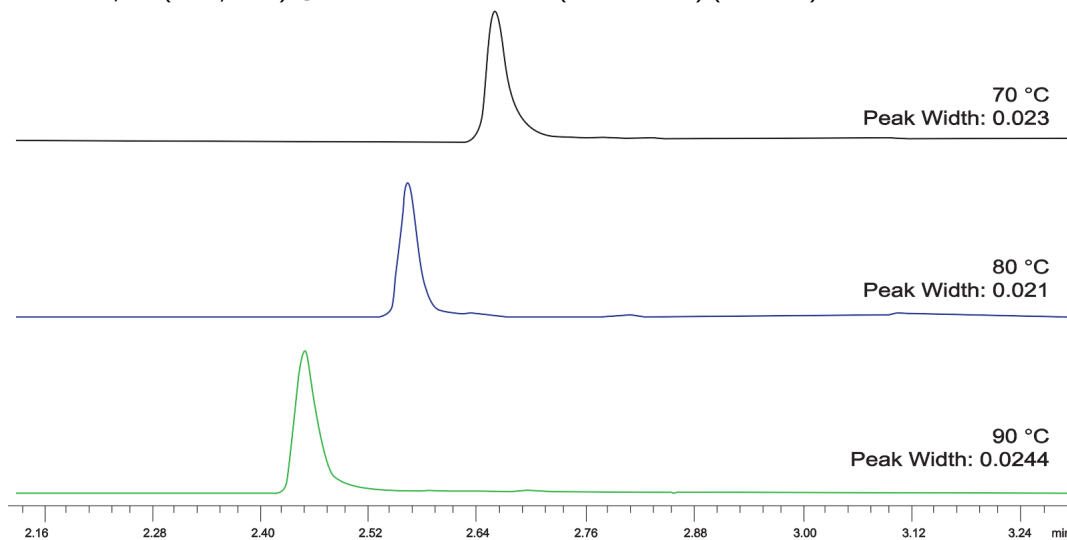
Eluent B: 0.1% TFA in Acetonitrile

Gradient Profile:	Step No.	Time (min)	Pct A	Pct B
	1	0	80	20
	2	6	45	55
	3	6.1	10	90
	4	6.3	80	20
	5	6.5	10	90
	6	6.7	80	20
	7	6.9	10	90
	8	7.1	80	20
	9	8	80	20

Flow Rate: 0.5 mL/min

Col. Temp.: 70 °C

Detection: LC/UV (DAD, PDA) @ 280.000000000 nm (nanometers) (ambient)



ANALYTES:

