

# HPLC Application

ID No.: 25818

## Intact Reversed Phase Analysis of Infliximab-Temperature Effect (Detailed Overlay)

**Column:** bioZen<sup>™</sup> 2.6 µm WidePore C4, LC Column 100 x 2.1 mm, Ea

**Dimensions:** 100 x 2.1 mm ID

**Order No:** 00D-4786-AN

**Elution Type:** Gradient

**Eluent A:** 0.1% TFA in Water

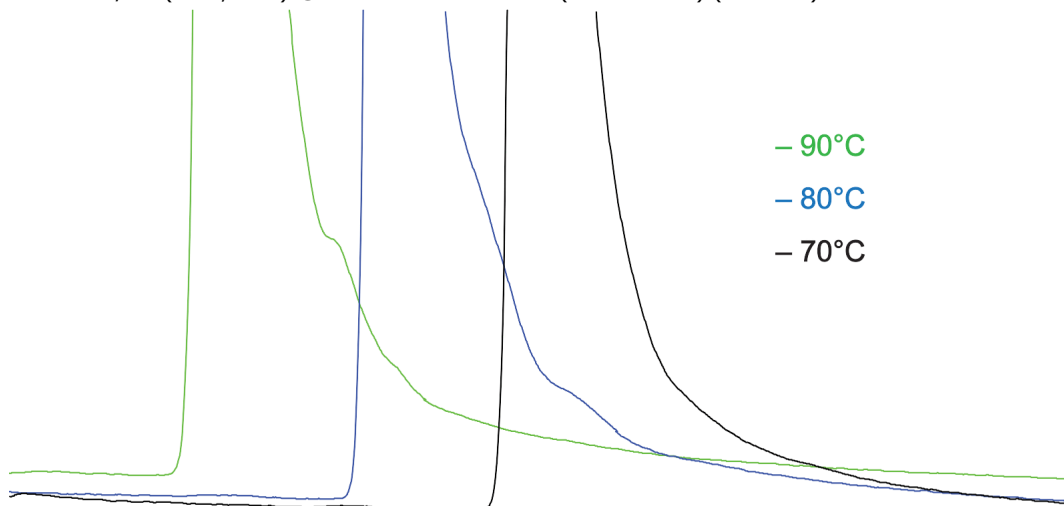
**Eluent B:** 0.1% TFA in Acetonitrile

Gradient Profile:	Step No.	Time (min)	Pct A	Pct B
	1	0	80	20
	2	6	45	55
	3	6.1	10	90
	4	6.3	80	20
	5	6.5	10	90
	6	6.7	80	20
	7	6.9	10	90
	8	7.1	80	20
	9	8	80	20

**Flow Rate:** 0.5 mL/min

**Col. Temp.:** 70 °C

**Detection:** LC/UV (DAD, PDA) @ 280.000000000 nm (nanometers) (ambient)



### ANALYTES:

