

HPLC Application

ID No.: 25843

EPA Method 537.1 - PFAS in Drinking Water

Column: Luna Omega 1.6u PS C18 100A, LC Column 100 x 2.1 mm, Ea

Dimensions: 100 x 2.1 mm ID

Order No: 00D-4752-AN

Elution Type: Gradient

Eluent A: 0.1% Acetic Acid in Water

Eluent B: Methanol

Gradient Profile:	Step No.	Time (min)	Pct A	Pct B
	1	0	80	20
	2	0.5	70	30
	3	7	10	90
	4	7.5	0	100
	5	9	0	100

Flow Rate: 0.7 mL/min

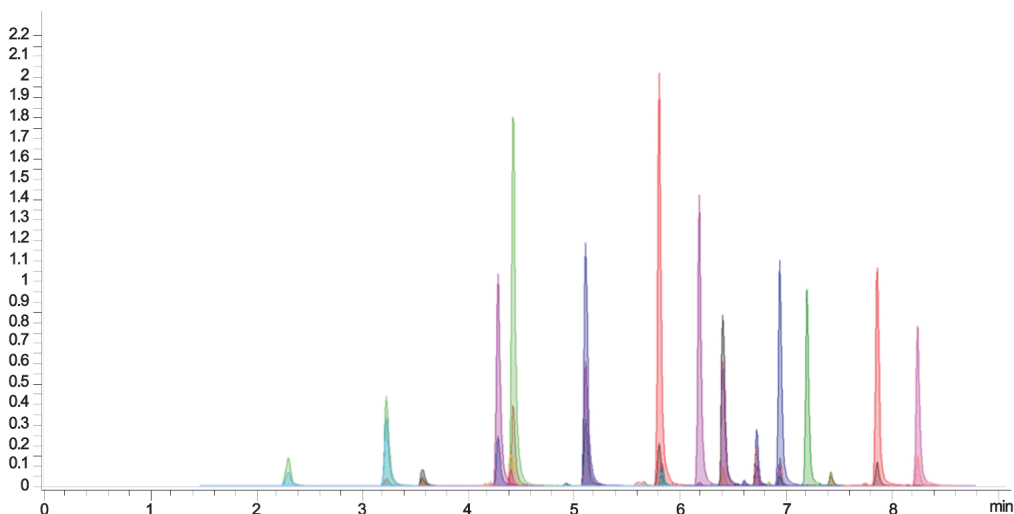
Col. Temp.: 25 °C

Detection: LC/MS/MS @ (ambient)

Analyst Note: Drinking Water



Products used in this application:



EPA Method 537.1 - PFAS in Drinking Water

ANALYTES:

- 1 PFBS
- 2 PFHxA
- 3 HFPO-DA
- 4 PFHpA
- 5 PFHxS
- 6 ADONA
- 7 PFOA
- 8 PFOS
- 9 PFNA
- 10 9CI-PF3ONS
- 11 PFDA
- 12 NMeFOSAA
- 13 PFUnA
- 14 NEtFOSAA
- 15 11CI-PF3OUdS
- 16 PFDoA
- 17 PFTrDA
- 18 PFTA

