

## Gradient Optimization for Intact Mass LC Methods- Gradient Program Length

**Column:** bioZen™ 2.6 µm WidePore C4, LC Column 100 x 2.1 mm, Ea

**Dimensions:** 100 x 2.1 mm ID

**Order No:** 00D-4786-AN

**Elution Type:** Gradient

**Eluent A:** 0.1 % Formic Acid in Water

**Eluent B:** 0.1% Formic Acid in Acetonitrile

Gradient Profile:	Step No.	Time (min)	Pct A	Pct B
	1	0.9	95	5
	2	7.5	10	90
	3	7.8	10	90
	4	8	95	5
	5	8.2	10	90
	6	8.3	10	90
	7	8.4	95	5
	8	12	95	5

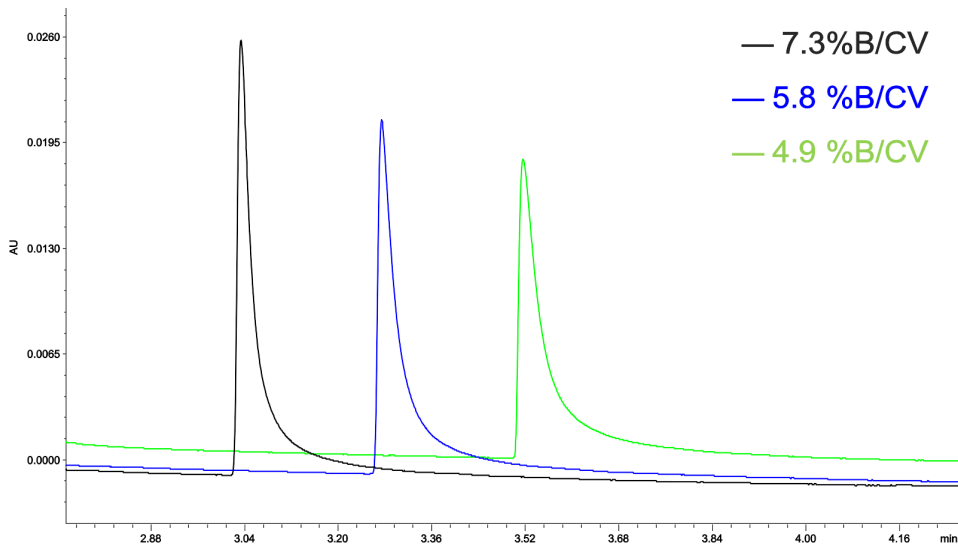


**Flow Rate:** 0.5 mL/min

**Col. Temp.:** 80 °C

**Detection:** LC/UV (DAD, PDA) @ (ambient)

**Analyst Note:** Remicade



### ANALYTES:

