

# HPLC Application

ID No.: 25874

## EPA Method 537.1 - Gen X and Short Chain PFAS in Drinking Water

**Column:** Luna Omega 1.6u PS C18 100A, LC Column 100 x 2.1 mm, Ea

**Dimensions:** 100 x 2.1 mm ID

**Order No:** 00D-4752-AN

**Elution Type:** Gradient

**Eluent A:** 0.1% Acetic Acid in Water

**Eluent B:** Methanol

Gradient Profile:	Step No.	Time (min)	Pct A	Pct B
	1	0	80	20
	2	0.5	70	30
	3	7	10	90
	4	7.5	0	100
	5	9	0	100

**Flow Rate:** 0.7 mL/min

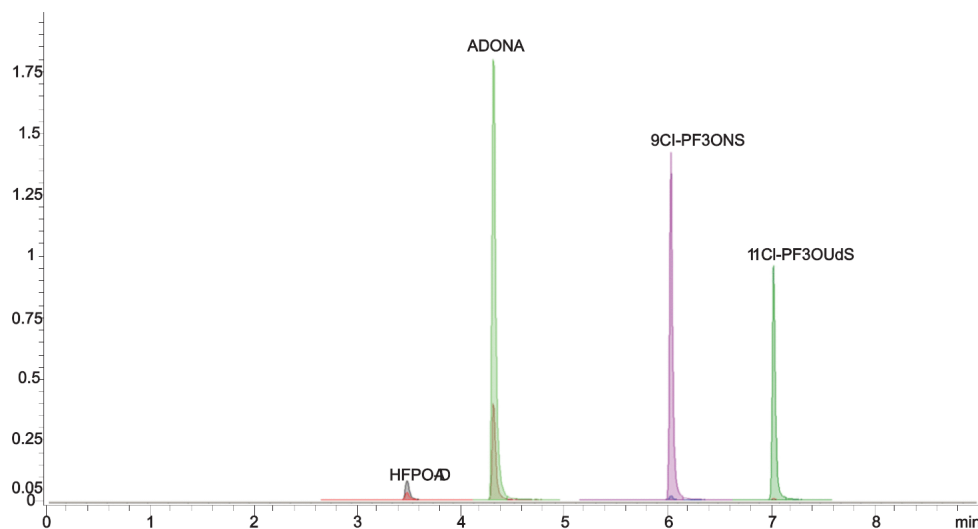
**Col. Temp.:** 25 °C

**Detection:** LC/MS/MS @ (ambient)

**Analyst Note:** Drinking Water



Products used in this application:



**ANALYTES:**