

# HPLC Application

ID No.: 25924

## USP Chloroquine Phosphate Assay on Kinetex 5 µm C18 150 x 4.6 mm - Standard Solution

**Column:** Kinetex<sup>®</sup> 5µm C18 100 Å, LC Column 150 x 4.6 mm, Ea

**Dimensions:** 150 x 4.6 mm ID

**Order No:** 00F-4601-E0

**Elution Type:** Gradient

**Eluent A:** A = 0.4% triethylamine in methanol and Buffer (70:30) (Buffer: 1.4 g/L of anhydrous di

| Gradient Profile: | Step No. | Time (min) | Pct A |
|-------------------|----------|------------|-------|
|                   | 1        | 0          | 100   |
|                   | 2        | 20         | 100   |

**Flow Rate:** 1 mL/min

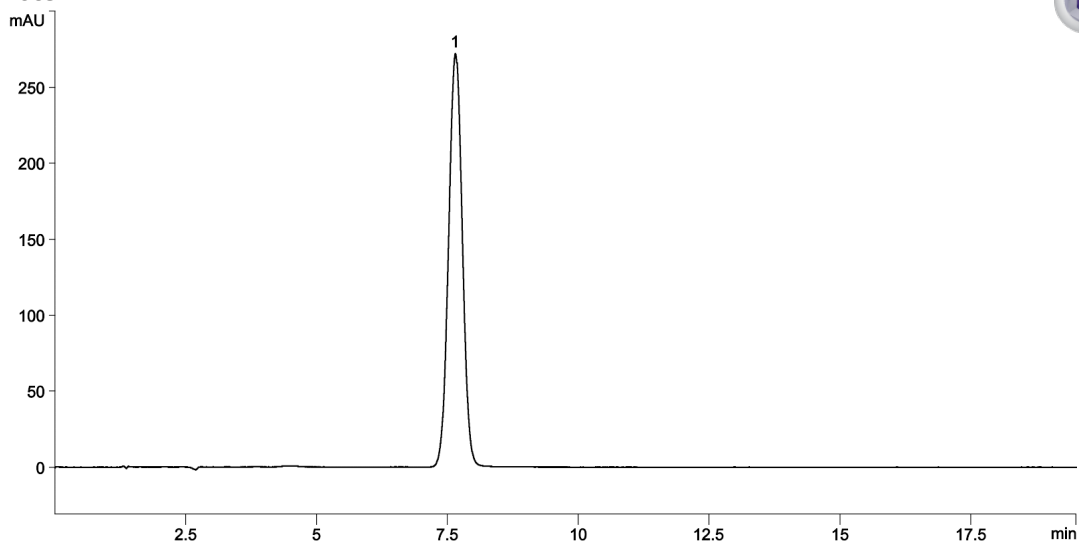
**Col. Temp.:** 26 °C

**Detection:** LC/UV (DAD, PDA) @ 260.000000000 nm (nanometers) (26 °C)

**Analyst Note:** Sample was at 0.3 mg/mL



Products used in this application:



### ANALYTES:

1 Chloroquine phosphate

Retention Time: 7.654 min

