

HPLC Application

ID No.: 25942

Rapid Sample Extraction of Chloroquine, Hydroxychloroquine, and Desethylchloroquine from Serum for LC-MS/MS

Column: Kinetex® F5 2.6µm 100 Å, LC Column 50 x 2.1 mm, Ea

Dimensions: 50 x 2.1 mm ID

Order No: 00B-4723-AN

Elution Type: Gradient

Eluent A: 0.1 % Formic acid in water

Eluent B: Methanol

Gradient Profile:	Step No.	Time (min)	Pct A	Pct B
	1	0	98	2
	2	2	93	7
	3	3	85	15
	4	3.2	60	40
	5	4.2	5	95
	6	6	98	2

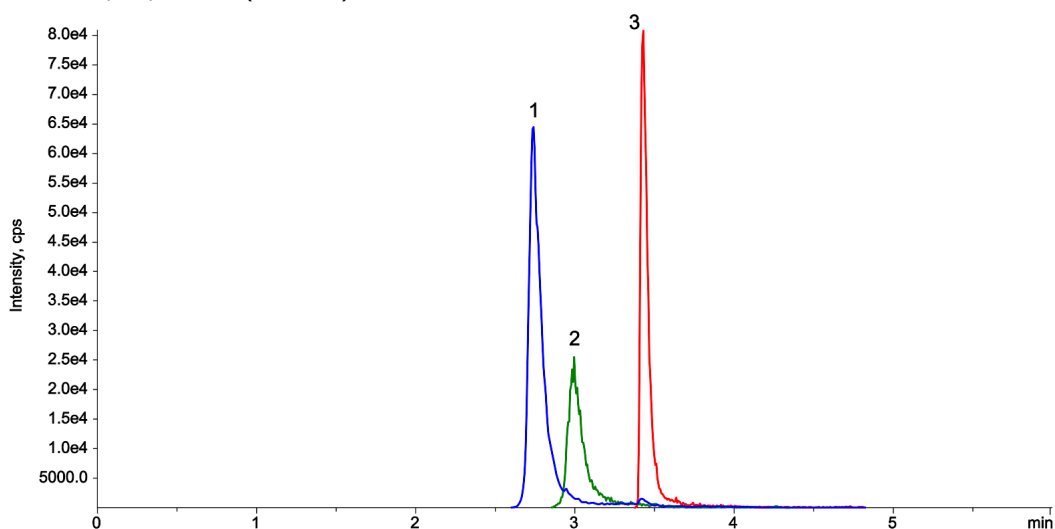
Flow Rate: 0.5 mL/min

Col. Temp.: 20 °C

Detection: LC/MS/MS @ (ambient)



Products used in this application:



ANALYTES:

- 1 Desethylchloroquine
- 2 Hydroxychloroquine
- 3 Chloroquine



Sample Preparation Details

for HPLC Application ID No.: 25942

Rapid Sample Extraction of Chloroquine, Hydroxychloroquine, and Desethylchloroquine from Serum for LC-MS/MS

PRODUCT DESCRIPTION:

Impact[™] Protein Precipitation, 2mL Square Well Filter Plate, 2/Pk

Order No.: CE0-7565

SOLID PHASE EXTRACTION (SPE) PROCEDURE:

Note: The solvent volumes shown below are for a bed mass.

The solvent volumes will need to be adjusted for a smaller or larger bed mass.

Condition:

Load:

Wash:

Dry:

Elute:

Final Prep and Analysis:

Inject: 10 µL on HPLC LC/MS/MS @ (ambient)

ANALYTES:	Spiked Conc. (ng/mL)	Log P	pKa	% Rec	%RSC (n=0)
1 Desethylchloroquine	0				
2 Hydroxychloroquine	0				
3 Chloroquine	0				

Note: This method is designed as a convenient starting point for further investigation and can be tailored to meet your extraction goals. Call your local Phenomenex Representative for assistance in method development and optimization techniques.

©2024 Phenomenex Inc. All rights reserved.

For more information contact your Phenomenex Representative at support@phenomenex.com



Phenomenex products are available worldwide.

www.phenomenex.com

support@phenomenex.com