

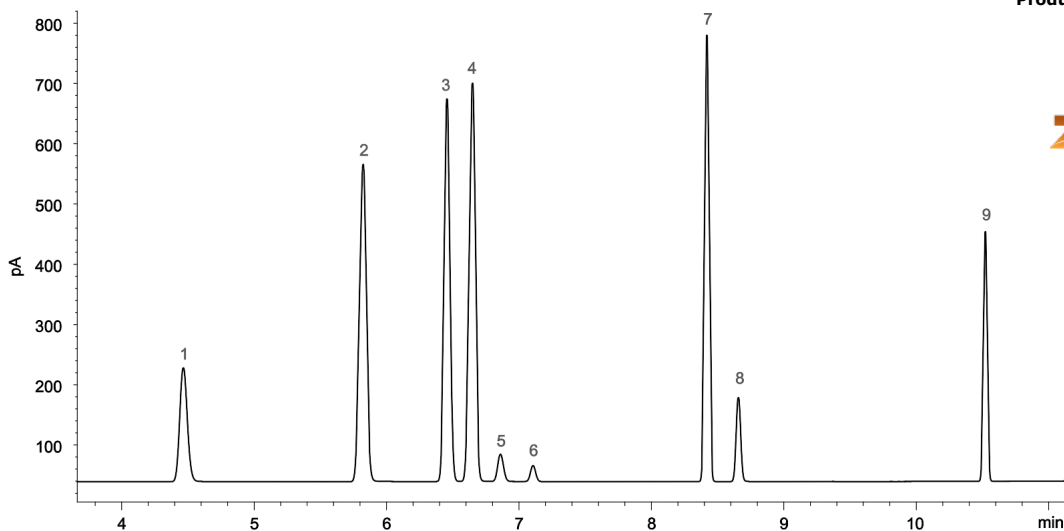
## Separation of Residual Solvent Critical Pairs in Less than 15 min using Zebron ZB-624PLUS GC column (APP ID 24)

**Column:** Zebron ZB-624plus, GC Cap. Column 30m x 0.32mm x 1.8µm, Ea  
**Phase:** Proprietary Pesticides Phase  
**Dimensions:** 30 meters x 0.32 mm x 1.8 µm  
**Order No:** 7HM-G040-31  
**Oven Profile:** 40°C for 5 min to 260°C @ 25°C/min 260°C for 8.8 min 260°C for 3 min

**Carrier Gas:** Constant Flow Helium, 1 mL/min  
**Injection:** Split 20:1 1 µL @ 200°C  
**Detection:** GC/FID (250°C)



Products used in this application:



### ANALYTES:

- 1** Methanol  
Retention Time: 4.47 min
- 2** Ethanol  
Retention Time: 5.82 min
- 3** Acetone  
Retention Time: 6.46 min
- 4** IPA  
Retention Time: 6.65 min
- 5** Acetonitrile  
Retention Time: 6.86 min
- 6** DCM  
Retention Time: 7.11 min
- 7** Ethyl Acetate  
Retention Time: 8.42 min
- 8** THF  
Retention Time: 8.66 min
- 9** Toluene  
Retention Time: 10.52 min

