

## Fluconazole Sample Solution 3 mg/mL on Kinetex 2.6 µm C18 100 x 4.6 mm

**Column:** Kinetex® 2.6 µm C18 100 Å, LC Column 100 x 4.6 mm, Ea

**Dimensions:** 100 x 4.6 mm ID

**Order No:** 00D-4462-E0

**Elution Type:** Isocratic

**Eluent A:** Water:Acetonitrile 80:20 (Pre-mixed)

Gradient	Step No.	Time (min)	Pct A
<b>Profile:</b>	<b>1</b>	15	100

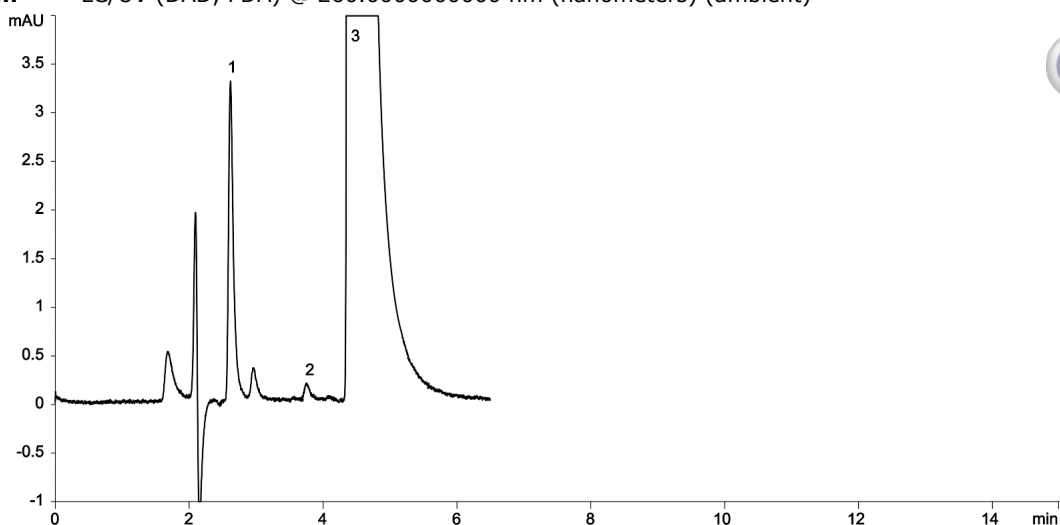
**Flow Rate:** 0.5 mL/min

**Col. Temp.:** 40 °C

**Detection:** LC/UV (DAD, PDA) @ 260.000000000 nm (nanometers) (ambient)



Products used in this application:



### ANALYTES:

- 1** Fluconazole Related Compound A

Retention Time: 2.642 min

- 2** Fluconazole Related Compound B

Retention Time: 3.788 min

- 3** Fluconazole

Retention Time: 4.432 min

