

HPLC Application

ID No.: 26199

USP Sildenafil Related Compound A RS Identification Solution 0.0075 mg/mL on Luna Omega 5 μ m C18 150x4.6mm

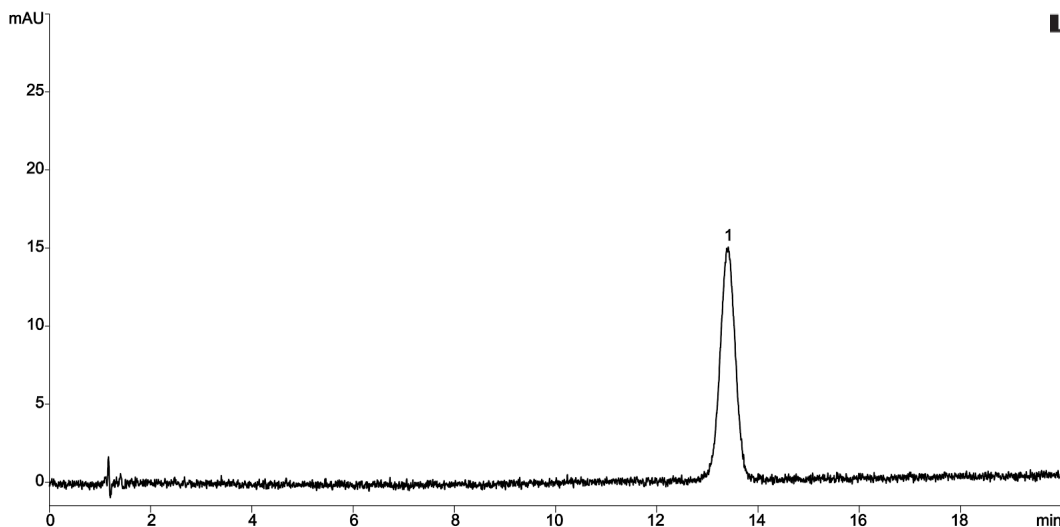
Column: Luna[®] Omega 5 μ m C18 100 \AA , LC Column 150 x 4.6 mm, Ea
Dimensions: 150 x 4.6 mm ID
Order No: 00F-4785-E0
Elution Type: Isocratic
Eluent A: Buffer (dilute 7 mL of triethylamine with water to 1 L. Stir and adjust with
Gradient

Step No.	Time (min)	Pct A
1	20	100

Flow Rate: 1.4 mL/min
Col. Temp.: 30 $^{\circ}$ C
Detection: LC/UV (DAD, PDA) @ 290.000000000 nm (nanometers) (30 $^{\circ}$ C)
Analyst Note: 0.0075 mg/mL



Products used in this application:



ANALYTES:

- 1 Sildenafil related compound A
Retention Time: 13.411 min

