

HPLC Application

ID No.: 26249

Diclofenac Sodium Ph.Eur. Reference Solution B System Suitability on Luna 5 µm C18(2) 250x4.6mm LC/UV

Column: Luna® 5 µm C18(2) 100 Å, LC Column 250 x 4.6 mm, Ea

Dimensions: 250 x 4.6 mm ID

Order No: 00G-4252-E0

Elution Type: Isocratic

Eluent A: Mix 34 volumes of a solution containing 0.5 g/L of phosphoric acid R and 0.8 g/L of sodium phosphate dibasic R, previous

Gradient

Step No.	Time (min)	Pct A
1	40	100

Profile:

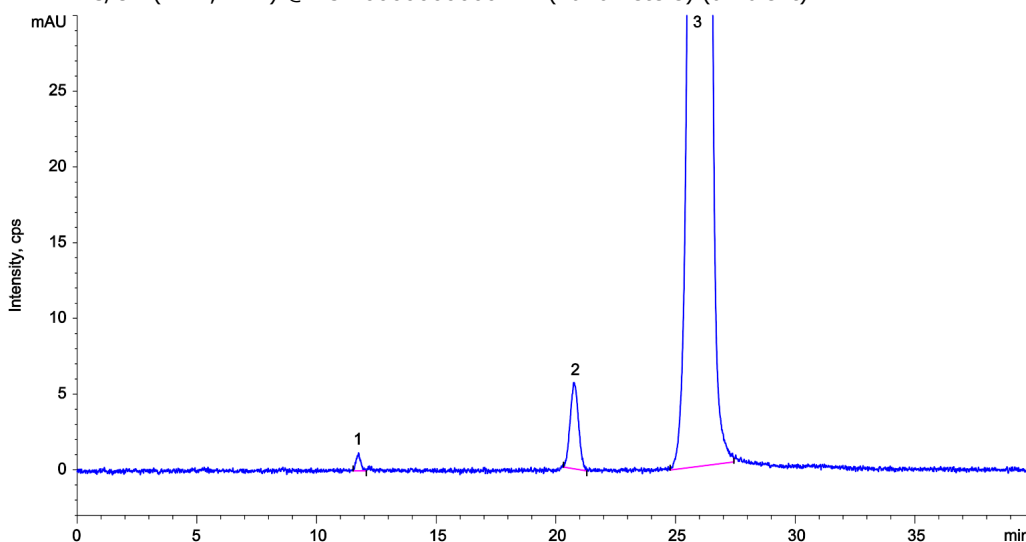
Flow Rate: 1 mL/min

Col. Temp.: 25 °C

Detection: LC/UV (DAD, PDA) @ 254.000000000 nm (nanometers) (ambient)



Products used in this application:



ANALYTES:

- 1** Diclofenac Impurity A
Retention Time: 11.798 min
- 2** Diclofenac Impurity F
Retention Time: 20.775 min
- 3** Diclofenac
Retention Time: 26.043 min

