

# HPLC Application

ID No.: 26253



## Diclofenac Sodium Ph.Eur. Reference Solution A System Suitability on Kinetex 2.6 µm C18 100x4.6mm LC/UV

**Column:** Kinetex® 2.6 µm C18 100 Å, LC Column 100 x 4.6 mm, Ea

**Dimensions:** 100 x 4.6 mm ID

**Order No:** 00D-4462-E0

**Elution Type:** Isocratic

**Eluent A:** Mix 34 volumes of a solution containing 0.5 g/L of phosphoric acid R and 0.8 g/L of sodium phosphate dibasic R, previous

| Gradient Profile: | Step No. | Time (min) | Pct A |
|-------------------|----------|------------|-------|
|                   | 1        | 40         | 100   |

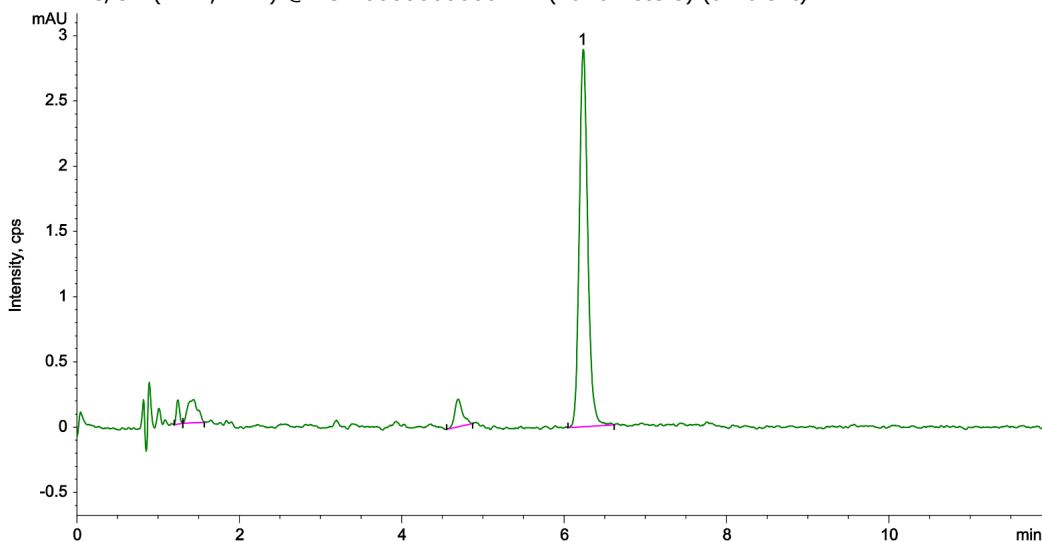
**Flow Rate:** 1 mL/min

**Col. Temp.:** 25 °C

**Detection:** LC/UV (DAD, PDA) @ 254.000000000 nm (nanometers) (ambient)



Products used in this application:



### ANALYTES:

1 Diclofenac

Retention Time: 6.228 min

