

# HPLC Application

ID No.: 26257

## Diclofenac Sodium Ph.Eur. Reference Solution A System Suitability on Luna 5 µm C18(2) 250x4.6mm LC/UV

**Column:** Luna® 5 µm C18(2) 100 Å, LC Column 250 x 4.6 mm, Ea

**Dimensions:** 250 x 4.6 mm ID

**Order No:** 00G-4252-E0

**Elution Type:** Isocratic

**Eluent A:** Mix 34 volumes of a solution containing 0.5 g/L of phosphoric acid R and 0.8 g/L of sodium phosphate dibasic R, previous

Gradient	Step No.	Time (min)	Pct A
----------	----------	------------	-------

Profile:	1	40	100
----------	---	----	-----

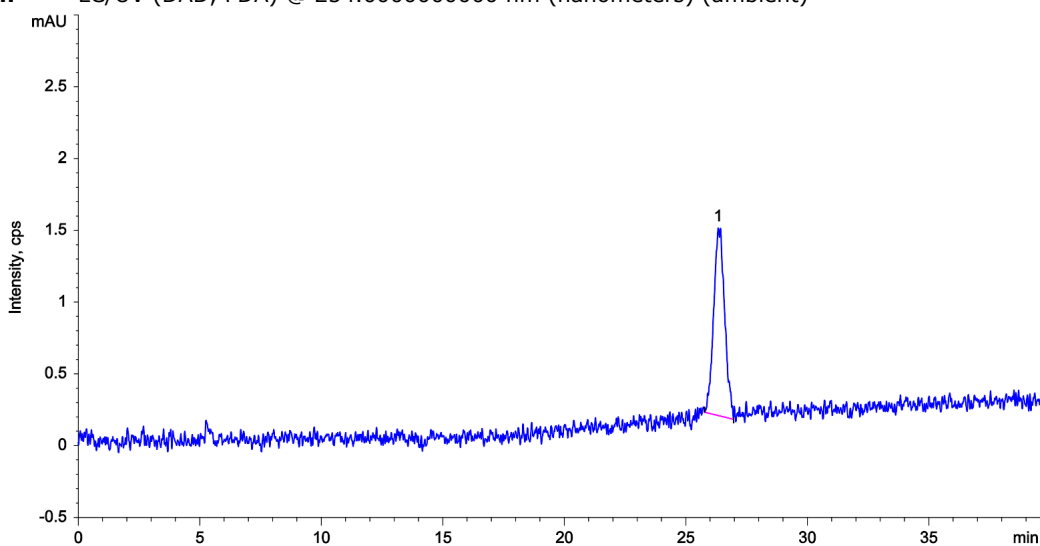
**Flow Rate:** 1 mL/min

**Col. Temp.:** 25 °C

**Detection:** LC/UV (DAD, PDA) @ 254.000000000 nm (nanometers) (ambient)



Products used in this application:



### ANALYTES:

1 Diclofenac

Retention Time: 26.342 min

