

HPLC Application

ID No.: 26258

Diclofenac Sodium Ph.Eur. Test Solution on Luna 5 µm C18(2) 250x4.6mm LC/UV

Column: Luna® 5 µm C18(2) 100 Å, LC Column 250 x 4.6 mm, Ea

Dimensions: 250 x 4.6 mm ID

Order No: 00G-4252-E0

Elution Type: Isocratic

Eluent A: Mix 34 volumes of a solution containing 0.5 g/L of phosphoric acid R and 0.8 g/L of sodium

Gradient

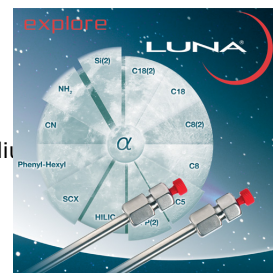
| Step No. | Time (min) | Pct A |
|----------|------------|-------|
| 1 | 40 | 100 |

Profile:

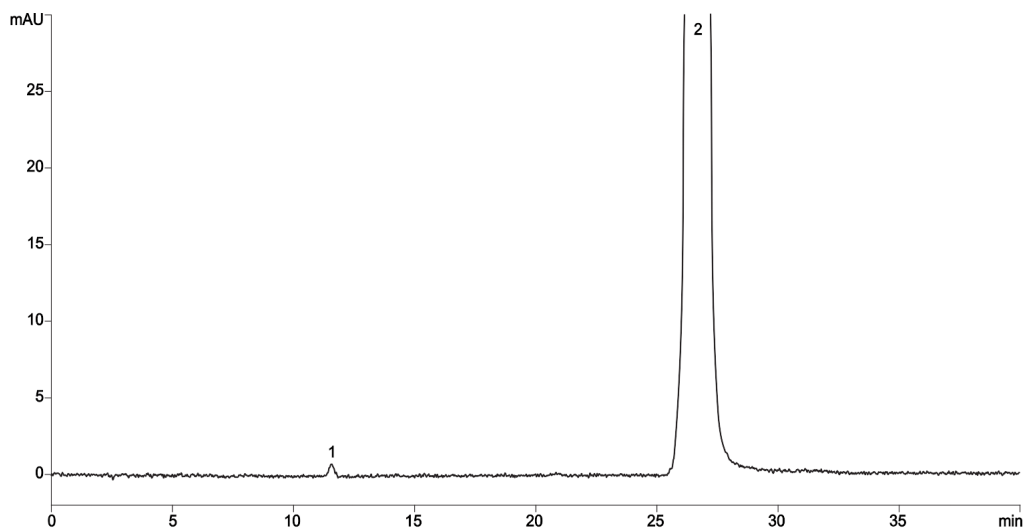
Flow Rate: 1 mL/min

Col. Temp.: 25 °C

Detection: LC/UV (DAD, PDA) @ 254.000000000 nm (nanometers) (ambient)



Products used in this application:



ANALYTES:

1 Diclofenac Impurity A

Retention Time: 11.579 min

2 Diclofenac

Retention Time: 26.683 min

