

# HPLC Application

ID No.: 26290

## Lisinopril Ph. Eur. System Suitability Reference Solution B on Luna Omega 5 µm C18 250 x 4.6 mm on Agilent 1100

**Column:** Luna® Omega 5 µm C18 100 Å, LC Column 250 x 4.6 mm, Ea

**Dimensions:** 250 x 4.6 mm ID

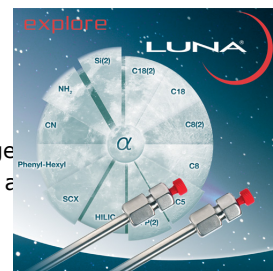
**Order No:** 00G-4785-E0

**Elution Type:** Gradient

**Eluent A:** Mix 3 volumes of acetonitrile R1 and 97 volumes of 3.12 g/L solution of sodium dihydrogen phosphate adjusted to pH 7.0

**Eluent B:** Mix 20.5 volumes of acetonitrile R1 and 79.5 volumes of 3.12 g/L solution of phosphoric acid adjusted to pH 2.5

Gradient Profile:	Step No.	Time (min)	Pct A	Pct B
	1	0	100	
	2	2	100	
	3	37	0	100
	4	62	0	100
	5	62.5	100	
	6	66	100	



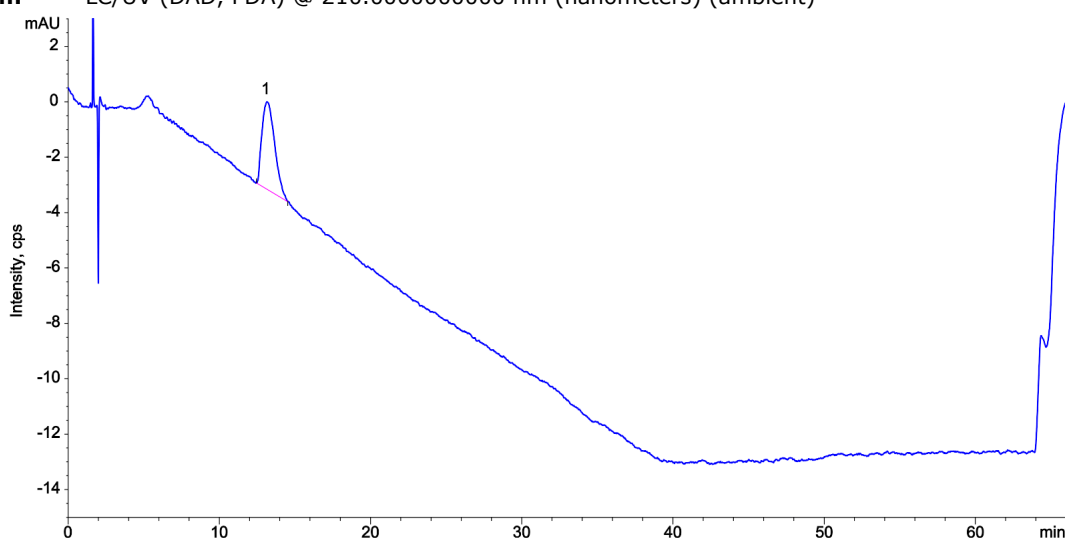
Products used in this application:



**Flow Rate:** 1.6 mL/min

**Col. Temp.:** 50 °C

**Detection:** LC/UV (DAD, PDA) @ 210.000000000 nm (nanometers) (ambient)



### ANALYTES:

1 Lisinopril

Retention Time: 13.193 min

