

HPLC Application

ID No.: 26291

Lisinopril Ph. Eur. Test Solution on Luna Omega 5 µm C18 250 x 4.6 mm on Agilent 1100 LC/UV

Column: Luna® Omega 5 µm C18 100 Å, LC Column 250 x 4.6 mm, Ea

Dimensions: 250 x 4.6 mm ID

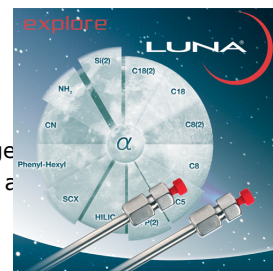
Order No: 00G-4785-E0

Elution Type: Gradient

Eluent A: Mix 3 volumes of acetonitrile R1 and 97 volumes of 3.12 g/L solution of sodium dihydrog

Eluent B: Mix 20.5 volumes of acetonitrile R1 and 79.5 volumes of 3.12 g/L solution of phosphoric a

Gradient Profile:	Step No.	Time (min)	Pct A	Pct B
	1	0	100	
	2	2	100	
	3	37	0	100
	4	62	0	100
	5	62.5	100	
	6	66	100	



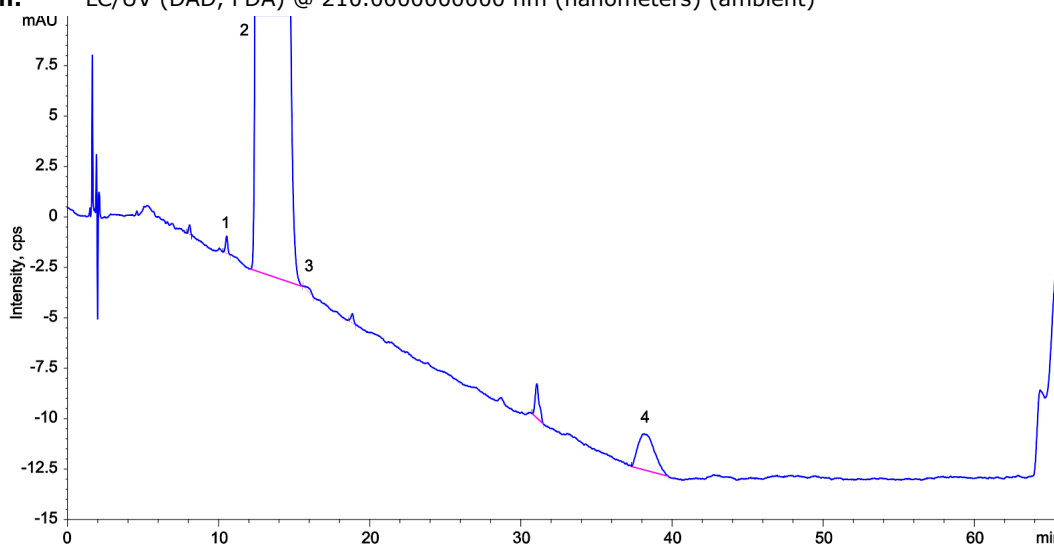
Products used in this application:



Flow Rate: 1.6 mL/min

Col. Temp.: 50 °C

Detection: LC/UV (DAD, PDA) @ 210.000000000 nm (nanometers) (ambient)



ANALYTES:

- 1** Impurity A
Retention Time: 10.538 min
- 2** Lisinopril
Retention Time: 13.351 min
- 3** Impurity E
Retention Time: 15.959 min
- 4** Impurity G
Retention Time: 38.159 min

