

# HPLC Application

ID No.: 26294

## Lisinopril Ph. Eur Reference Solution A+B+C+D on Luna Omega 5 µm C18 250 x 4.6 mm on Agilent 1100 LC/UV

**Column:** Luna® Omega 5 µm C18 100 Å, LC Column 250 x 4.6 mm, Ea

**Dimensions:** 250 x 4.6 mm ID

**Order No:** 00G-4785-E0

**Elution Type:** Gradient

**Eluent A:** Mix 3 volumes of acetonitrile R1 and 97 volumes of 3.12 g/L solution of sodium dihydrog

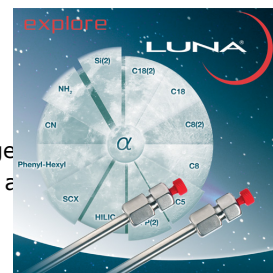
**Eluent B:** Mix 20.5 volumes of acetonitrile R1 and 79.5 volumes of 3.12 g/L solution of phosphoric a

Gradient Profile:	Step No.	Time (min)	Pct A	Pct B
	1	0	100	
	2	2	100	
	3	37	0	100
	4	62	0	100
	5	62.5	100	
	6	66	100	

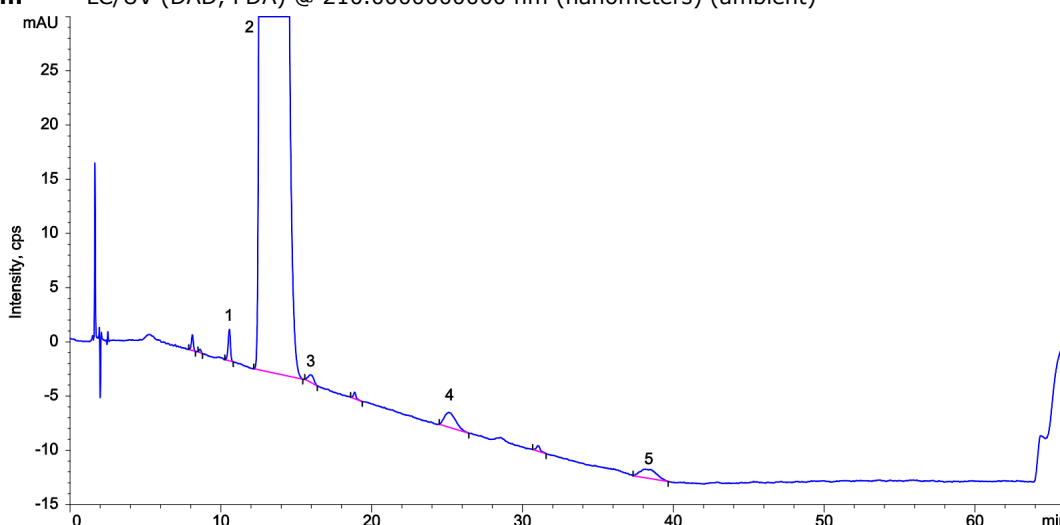
**Flow Rate:** 1.6 mL/min

**Col. Temp.:** 50 °C

**Detection:** LC/UV (DAD, PDA) @ 210.000000000 nm (nanometers) (ambient)



Products used in this application:



### ANALYTES:

- 1** Impurity A  
Retention Time: 10.565 min
- 2** Lisinopril  
Retention Time: 13.283 min
- 3** Impurity E  
Retention Time: 15.945 min
- 4** Impurity F  
Retention Time: 25.09 min
- 5** Impurity G  
Retention Time: 38.518 min

