

HPLC Application

ID No.: 26297

Lisinopril Ph. Eur. Test Solution on Kinetex 5 µm C18 250 x 4.6 mm on Agilent 1100 LC/UV

Column: Kinetex[®] 5µm C18 100 Å, LC Column 250 x 4.6 mm, Ea
Dimensions: 250 x 4.6 mm ID
Order No: 00G-4601-E0
Elution Type: Gradient
Eluent A: Mix 3 volumes of acetonitrile R1 and 97 volumes of 3.12 g/L solution of sodium dihydrog
Eluent B: Mix 20.5 volumes of acetonitrile R1 and 79.5 volumes of 3.12 g/L solution of phosphoric a



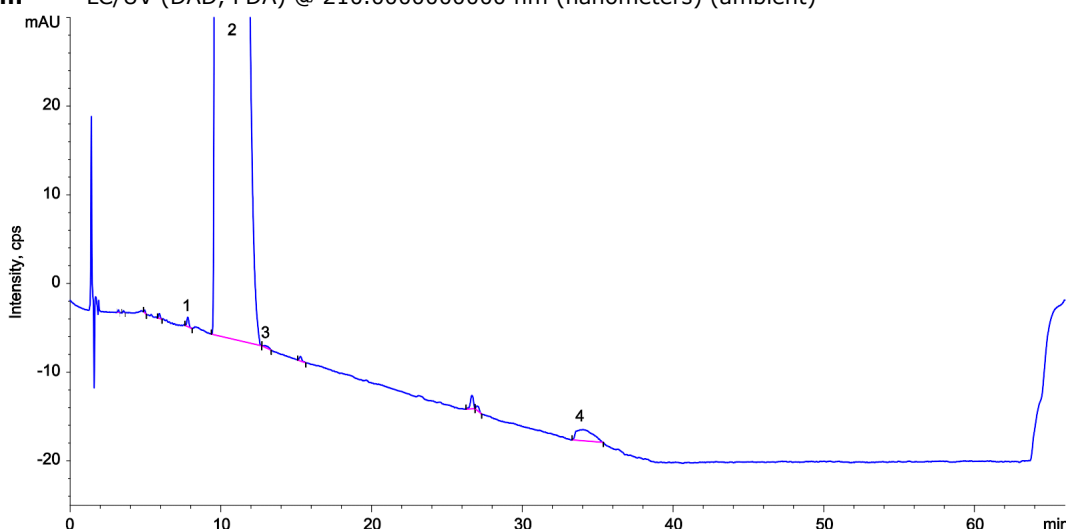
/ adjusted

Gradient Profile:	Step No.	Time (min)	Pct A	Pct B
	1	0	100	
	2	2	100	
	3	37	0	100
	4	62	0	100
	5	62.5	100	
	6	66	100	

Products used in this application:



Flow Rate: 1.6 mL/min
Col. Temp.: 50 °C
Detection: LC/UV (DAD, PDA) @ 210.000000000 nm (nanometers) (ambient)



ANALYTES:

- 1** Impurity A
Retention Time: 7.811 min
- 2** Lisinopril
Retention Time: 10.21 min
- 3** Impurity E
Retention Time: 13.083 min
- 4** Impurity G
Retention Time: 34.07 min

