

HPLC Application

ID No.: 26300



Lisinopril Ph. Eur. Reference Solution A+B+C+D on Kinetex 5 µm C18 250 x 4.6 mm on Agilent 1100 LC/UV

Column: Kinetex® 5µm C18 100 Å, LC Column 250 x 4.6 mm, Ea

Dimensions: 250 x 4.6 mm ID

Order No: 00G-4601-E0

Elution Type: Gradient

Eluent A: Mix 3 volumes of acetonitrile R1 and 97 volumes of 3.12 g/L solution of sodium dihydroge

Eluent B: Mix 20.5 volumes of acetonitrile R1 and 79.5 volumes of 3.12 g/L solution of phosphoric a

| Gradient Profile: | Step No. | Time (min) | Pct A | Pct B |
|-------------------|----------|------------|-------|-------|
| | 1 | 0 | 100 | |
| | 2 | 2 | 100 | |
| | 3 | 37 | 0 | 100 |
| | 4 | 62 | 0 | 100 |
| | 5 | 62.5 | 100 | |
| | 6 | 66 | 100 | |

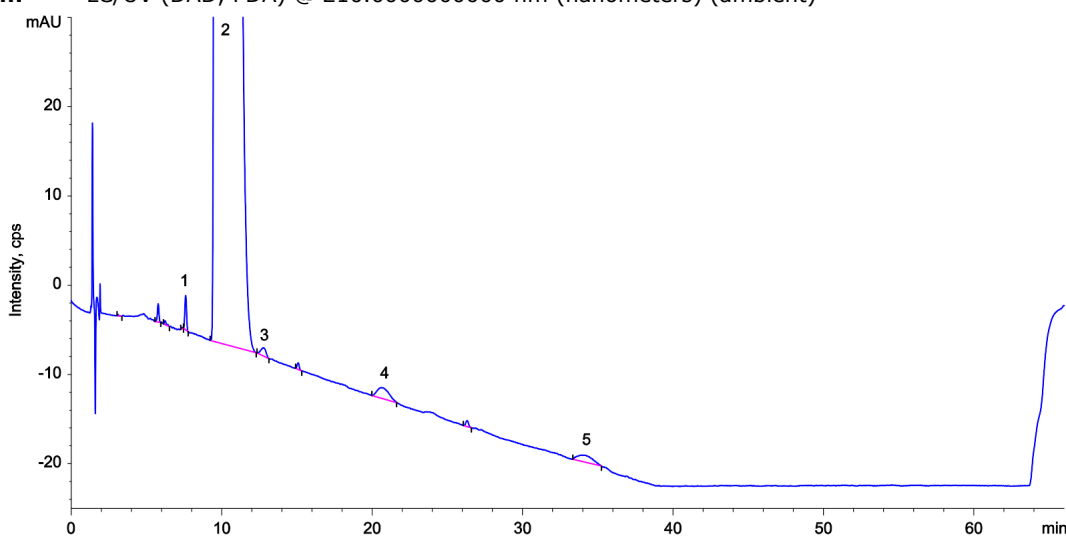
Flow Rate: 1.6 mL/min

Col. Temp.: 50 °C

Detection: LC/UV (DAD, PDA) @ 210.000000000 nm (nanometers) (ambient)



Products used in this application:



ANALYTES:

- 1 Impurity A
Retention Time: 7.57 min
- 2 Lisinopril
Retention Time: 10.089 min
- 3 Impurity E
Retention Time: 12.733 min
- 4 Impurity F
Retention Time: 20.691 min
- 5 Impurity G
Retention Time: 34.271 min

