

# HPLC Application

ID No.: 26302

## Lisinopril Ph. Eur. System Suitability Reference Solution B on Kinetex 5 µm XB-C18 250 x 4.6 mm on Agilent 1100

**Column:** Kinetex® 5µm XB-C18 100 Å, LC Column 250 x 4.6 mm, Ea

**Dimensions:** 250 x 4.6 mm ID

**Order No:** 00G-4605-E0

**Elution Type:** Gradient

**Eluent A:** Mix 3 volumes of acetonitrile R1 and 97 volumes of 3.12 g/L solution of sodium dihydroge

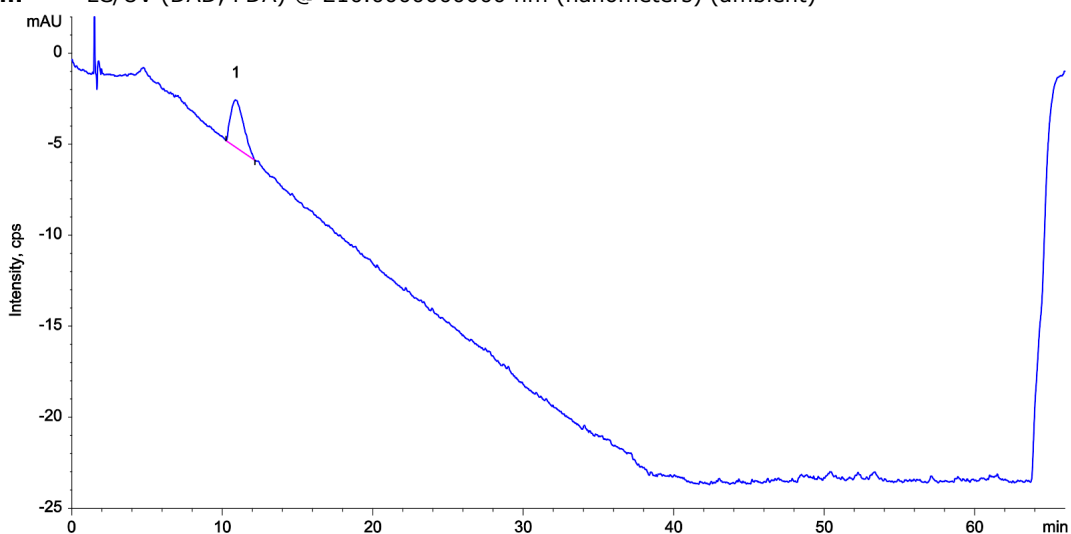
**Eluent B:** Mix 20.5 volumes of acetonitrile R1 and 79.5 volumes of 3.12 g/L solution of phosphoric a

Gradient Profile:	Step No.	Time (min)	Pct A	Pct B
	1	0	100	
	2	2	100	
	3	37	0	100
	4	62	0	100
	5	62.5	100	
	6	66	100	

**Flow Rate:** 1.6 mL/min

**Col. Temp.:** 50 °C

**Detection:** LC/UV (DAD, PDA) @ 210.000000000 nm (nanometers) (ambient)



### ANALYTES:

1 Lisinopril

Retention Time: 10.861 min



Products used in this application:

