

HPLC Application

ID No.: 26347

USP Alosetron Assay Standard/Sample solution (50 µg/mL) on Gemini 3 µm C18 75 x 4.6 mm using Agilent 1260

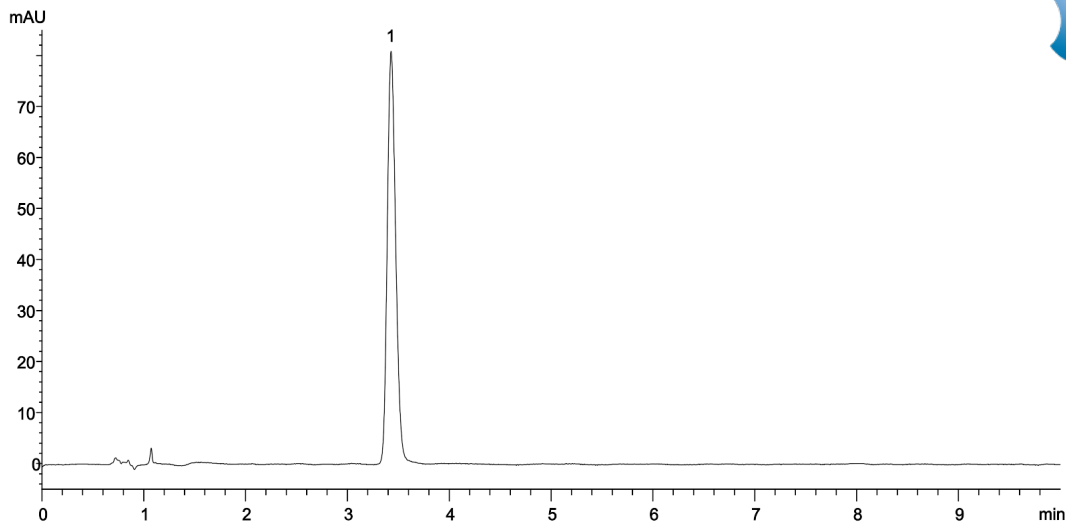
Column: Gemini® 3 µm C18 110 Å, LC Column 75 x 4.6 mm, Ea
Dimensions: 75 x 4.6 mm ID
Order No: 00C-4439-E0
Elution Type: Isocratic
Eluent A: 0.02 M monobasic sodium phosphate. Adjust with phosphoric acid to a pH of 3.0
Eluent B: Acetonitrile
Gradient

Step No.	Time (min)	Pct A	Pct B
1	10	80	20

Profile:
Flow Rate: 1 mL/min
Col. Temp.: 30 °C
Detection: LC/UV (DAD, PDA) @ 220.000000000 nm (nanometers) (ambient)



Products used in this application:



ANALYTES:

- 1 Alosetron HCl
Retention Time: 3.429 min

