

## USP Doxepin Assay - Standard Solution on Luna 5 µm C8(2) 150 x 4.6 mm

**Column:** Luna® 5 µm C8(2) 100 Å, LC Column 150 x 4.6 mm, Ea

**Dimensions:** 150 x 4.6 mm ID

**Order No:** 00F-4249-E0

**Elution Type:** Isocratic

**Eluent A:** 27.6 g/L monobasic sodium phosphate, pH 2.5

**Eluent B:** methanol

Gradient Profile:	Step No.	Time (min)	Pct A	Pct B
	1	0	70	30

**Flow Rate:** 1.32 mL/min

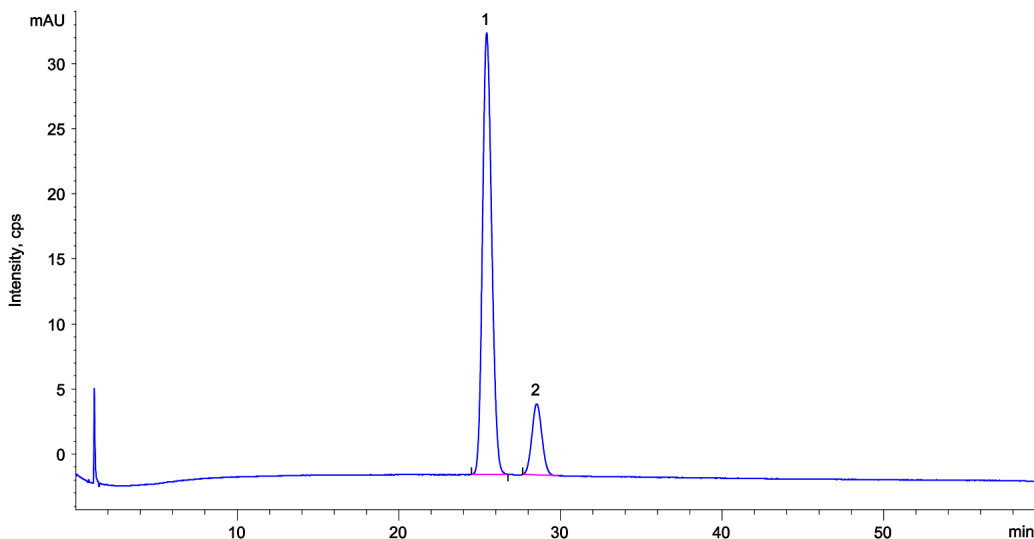
**Col. Temp.:** 50 °C

**Detection:** LC/UV (DAD, PDA) @ 254.000000000 nm (nanometers) (ambient)

**Analyst Note:** Standard solution/sample solution: 0.1 mg/mL of USP Doxepin Hydrochloride RS in Mobile phase.



Products used in this application:



### ANALYTES:

- 1** (E)-Doxepin  
Retention Time: 25.434 min
- 2** (Z)-Doxepin  
Retention Time: 28.527 min

