

USP Doxepin Assay - Standard Solution on Kinetex® 5 µm C8 150 x 4.6 mm

Column: Kinetex® 5µm C8 100 Å, LC Column 150 x 4.6 mm, Ea

Dimensions: 150 x 4.6 mm ID

Order No: 00F-4608-E0

Elution Type: Isocratic

Eluent A: 27.6 g/L monobasic sodium phosphate, pH 2.5

Eluent B: methanol

Gradient Profile:	Step No.	Time (min)	Pct A	Pct B
	1	0	70	30

Flow Rate: 1.32 mL/min

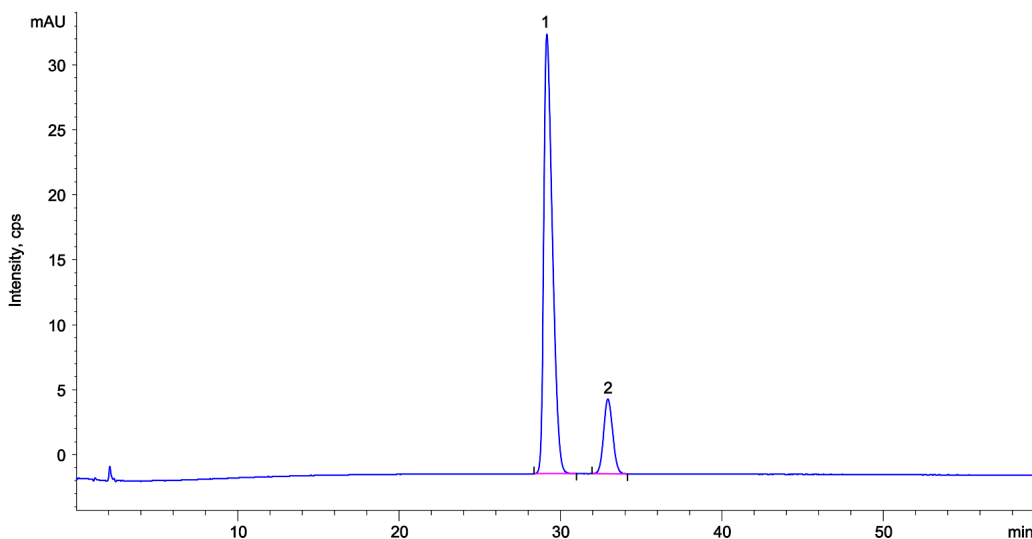
Col. Temp.: 50 °C

Detection: LC/UV (DAD, PDA) @ 254.000000000 nm (nanometers) (ambient)

Analyst Note: Standard solution/sample solution: 0.1 mg/mL of USP Doxepin Hydrochloride RS in Mobile phase.



Products used in this application:



ANALYTES:

- 1** (E)-Doxepin
Retention Time: 14.581 min
- 2** (Z)-Doxepin
Retention Time: 16.467 min

