

USP Doxepin Assay - Standard Solution on Kinetex® 2.6 µm C8 75 x 4.6 mm

Column: Kinetex® 2.6 µm C8 100 Å, LC Column 75 x 4.6 mm, Ea

Dimensions: 75 x 4.6 mm ID

Order No: 00C-4497-E0

Elution Type: Isocratic

Eluent A: 27.6 g/L monobasic sodium phosphate, pH 2.5

Eluent B: methanol

Gradient Profile:	Step No.	Time (min)	Pct A	Pct B
	1	0	70	30

Flow Rate: 1.32 mL/min

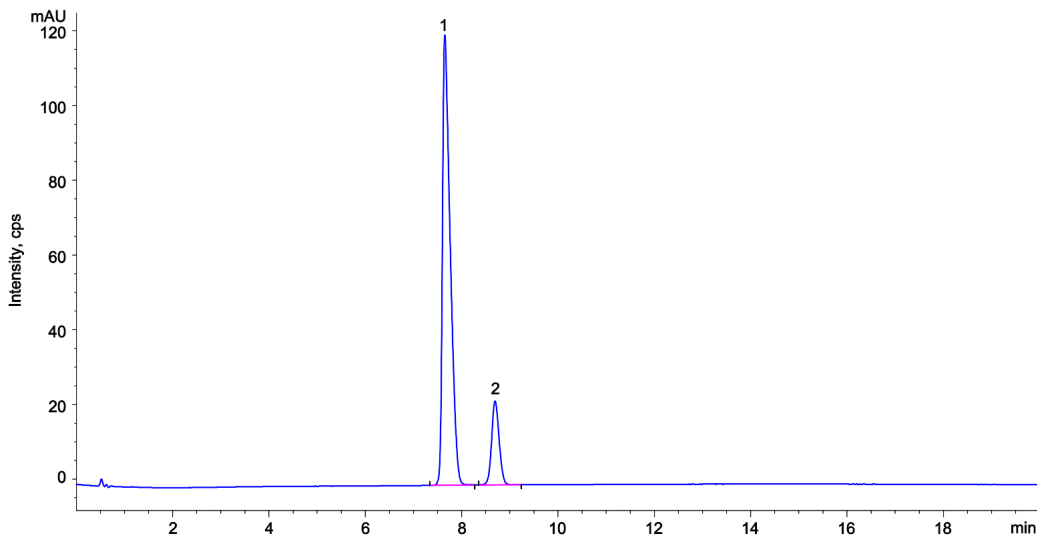
Col. Temp.: 50 °C

Detection: LC/UV (DAD, PDA) @ 254.000000000 nm (nanometers) (ambient)

Analyst Note: Standard solution/sample solution: 0.1 mg/mL of USP Doxepin Hydrochloride RS in Mobile phase.



Products used in this application:



ANALYTES:

1 (E)-Doxepin

Retention Time: 7.65 min

2 (Z)-Doxepin

Retention Time: 8.693 min

