

# HPLC Application

ID No.: 26385

## USP Alosetron Tablet Assay Standard/Sample solution (0.0115 mg/mL) on Gemini 3 $\mu$ m C18 75 x 4.6 mm using A

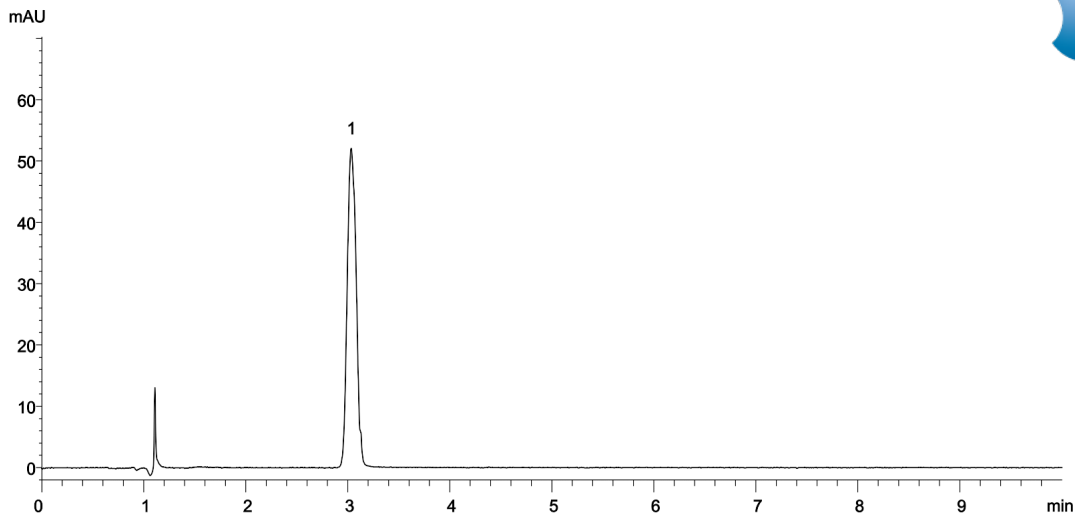
**Column:** Gemini<sup>®</sup> 3  $\mu$ m C18 110 Å, LC Column 75 x 4.6 mm, Ea  
**Dimensions:** 75 x 4.6 mm ID  
**Order No:** 00C-4439-E0  
**Elution Type:** Isocratic  
**Eluent A:** 0.02 M monobasic sodium phosphate. Adjust with phosphoric acid to a pH of 3.0  
**Eluent B:** Acetonitrile  
**Gradient**

Step No.	Time (min)	Pct A	Pct B
1	10	80	20

**Profile:**  
**Flow Rate:** 1 mL/min  
**Col. Temp.:** 25 °C  
**Detection:** LC/UV (DAD, PDA) @ 220.000000000 nm (nanometers) (ambient)



Products used in this application:



### ANALYTES:

- 1 Alosetron HCl  
Retention Time: 3.054 min

