

## LC-MS/MS Pesticides (simazine) - No Filter in Chili Extracts for the comparison of with/without Filter Vial

**Column:** Luna® Omega 3 µm C18 100 Å, LC Column 150 x 3.0 mm, Ea

**Dimensions:** 150 x 3 mm ID

**Order No:** 00F-4784-Y0

**Elution Type:** Gradient

**Eluent A:** 0.1% Formic Acid and 10mM Ammonium Acetate in water

**Eluent B:** 0.5% Formic Acid in Methanol

Gradient Profile:	Step No.	Time (min)	Pct A	Pct B
	1	0	95	5
	2	0.1	95	5
	3	0.5	40	60
	4	3.5	25	75
	5	8	15	85
	6	10.5	5	95
	7	12	5	95
	8	12.1	95	5
	9	18	95	5



Products used in this application:

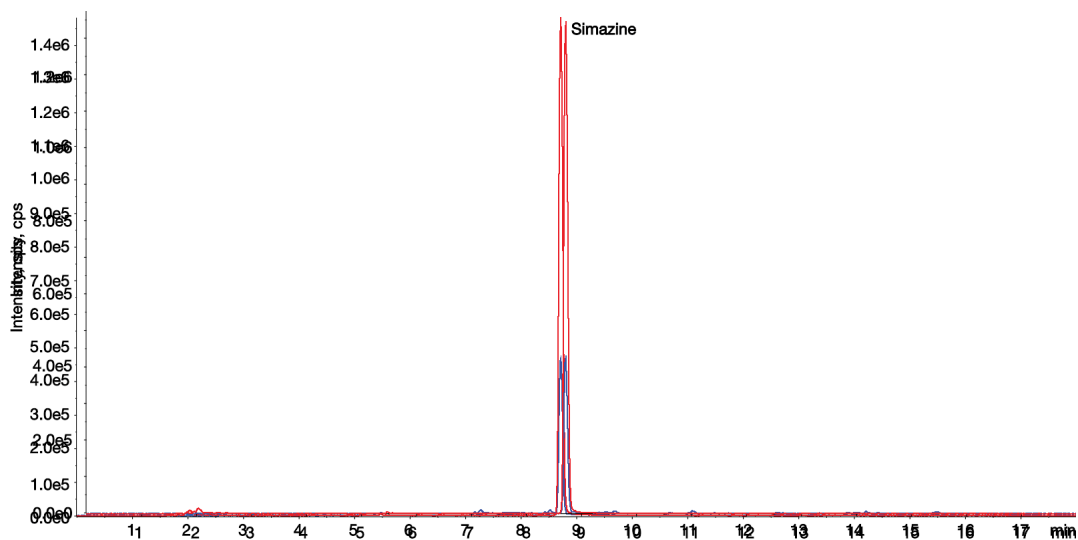


**Flow Rate:** 0.4 mL/min

**Col. Temp.:** 20 °C

**Detection:** LC/MS/MS @ (ambient)

- Analyst Note:**
- Prepared 10mg/mL simazine solutions with other 17 pesticide standards
  - Take sample to prepare a 10x Diluted mixture by placing 100uL of the existing mix into a 900uL of a 1:2 Water:Acetonitrile mix.
  - Place 30uL of the 10x diluted mixture into 270 uL of the chili powder supernatant for final analysis.



### ANALYTES:

- simazine  
Retention Time: 8.56 min
- simazine  
Retention Time: 8.56 min

