

HPLC Application

ID No.: 26542

Pharmaceutical Impurity Profile on Luna Omega 1.6 μm C18 (batch 3) 50x2.1 mm using Agilent 1200 UHPLC Bina

Column: Luna Omega 1.6 μm C18 100 \AA , LC Column 50 x 2.1 mm, Ea

Dimensions: 50 x 2.1 mm ID

Order No: 00B-4742-AN

Elution Type: Gradient

Eluent A: 0.1% Formic Acid in Water

Eluent B: 0.1% Formic Acid in Acetonitrile

Gradient Profile:	Step No.	Time (min)	Pct A	Pct B
	1	0	98	2
	2	0.5	98	2
	3	10.5	65	35
	4	11	65	35
	5	11.5	98	2
	6	15	98	2

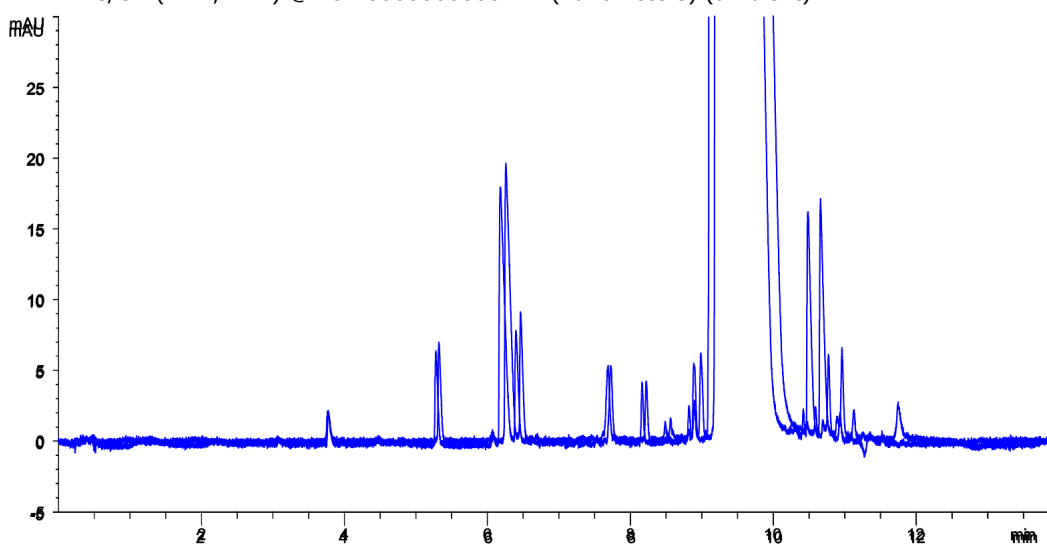
Flow Rate: 0.4 mL/min

Col. Temp.: 30 $^{\circ}\text{C}$

Detection: LC/UV (DAD, PDA) @ 254.000000000 nm (nanometers) (ambient)



Products used in this application:



ANALYTES:

