

Peptides Analysis on a Micro-LC with a Kinetex 2.6 µm XB-C18 150 x 0.3 mm

Column: Kinetex 2.6u XB-C18 100A, LC Column 150 x 0.3 mm, Ea

Dimensions: 150 x 0.3 mm ID

Order No: 00F-4496-AC

Elution Type: Gradient

Eluent A: 0.1% Formic Acid in Water

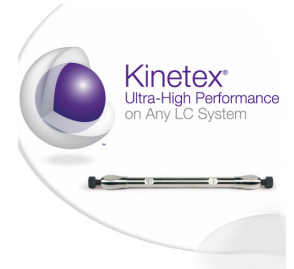
Eluent B: 0.1% Formic Acid in Acetonitrile

Gradient Profile:	Step No.	Time (min)	Pct A	Pct B
	1	0	98	2
	2	60	60	40
	3	60.1	20	80
	4	65	20	80
	5	65.1	98	2
	6	70	98	2

Flow Rate: 10 µL/min

Col. Temp.: 40 °C

Detection: LC/MS @ (250 °C)



Products used in this application:



ANALYTES:

