

HPLC Application

ID No.: 27536

USP Labetalol Standard Solution on Luna Omega 3u C18 150x4.6mm (2) using Agilent 1290 UHPLC system

Column: Luna® Omega 3 µm C18 100 Å, LC Column 150 x 4.6 mm, Ea

Dimensions: 150 x 4.6 mm ID

Order No: 00F-4784-E0

Elution Type: Gradient

Eluent A: Phosphoric Acid and Water (0.1:99.9, v/v)

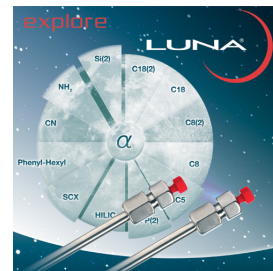
Eluent B: Acetonitrile and Mobile phase A (50:50, v/v)

Gradient Profile:	Step No.	Time (min)	Pct A	Pct B
	1	0	100	0
	2	4.29	100	0
	3	34.29	0	100
	4	38.57	0	100
	5	38.58	100	0
	6	47.14	100	0

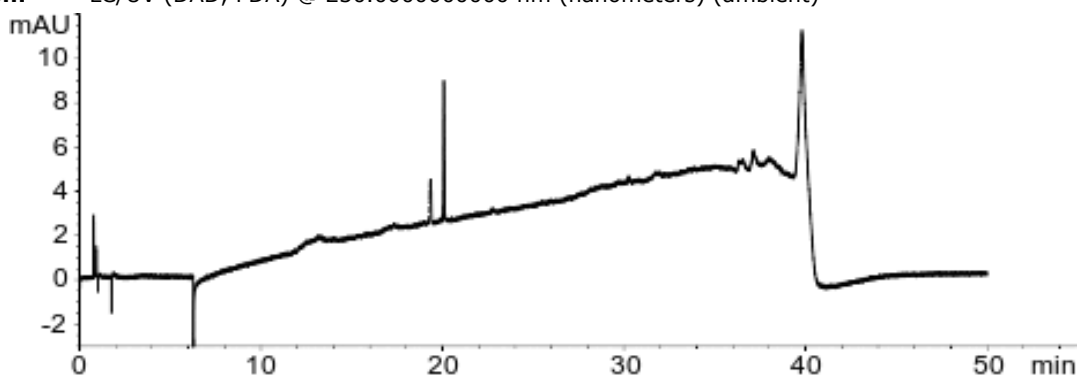
Flow Rate: 1.75 mL/min

Col. Temp.: 40 °C

Detection: LC/UV (DAD, PDA) @ 230.000000000 nm (nanometers) (ambient)



Products used in this application:



ANALYTES:

- 1 Labetalol
Retention Time: 19.353 min
- 2 Labetalol Related Compound F
Retention Time: 20.075 min

