

# HPLC Application

ID No.: 27546

## EuPh Labetalol Reference Solution B on Luna Omega 3u C18 150x4.6mm using Agilent 1290 UHPLC system

**Column:** N/A

**Dimensions:** N/A

**Order No:** N/A

**Elution Type:** N/A

**Eluent A:** Phosphoric Acid and Water (0.1:99.9, v/v)

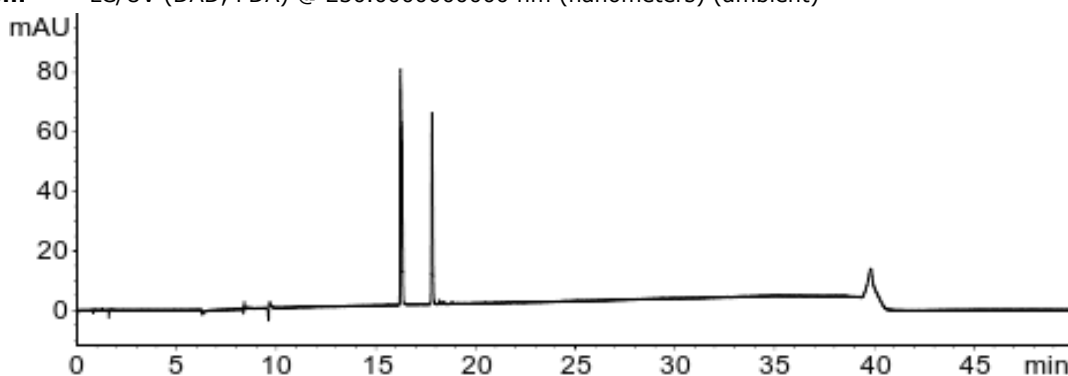
**Eluent B:** Acetonitrile and Mobile phase A (50:50, v/v)

<b>Gradient Profile:</b>	<b>Step No.</b>	<b>Time (min)</b>	<b>Pct A</b>	<b>Pct B</b>
	<b>1</b>	0	100	0
	<b>2</b>	4.29	100	0
	<b>3</b>	34.29	0	100
	<b>4</b>	38.57	0	100
	<b>5</b>	38.58	100	0
	<b>6</b>	47.14	100	0

**Flow Rate:** 1.75 mL/min

**Col. Temp.:** 40 °C

**Detection:** LC/UV (DAD, PDA) @ 230.000000000 nm (nanometers) (ambient)



### ANALYTES:

- 1** Labetalol  
Retention Time: 16.239 min
- 2** Labetalol Impurity A  
Retention Time: 17.813 min

