

HPLC Application

ID No.: 27547

EuPh Labetalol Reference Solution C on Luna Omega 3u C18 150x4.6mm using Agilent 1290 UHPLC system

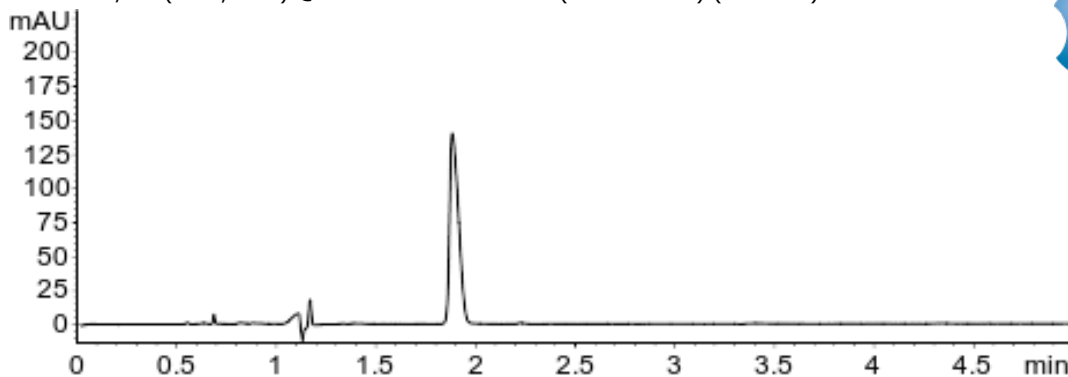
Column: Gemini[®] 3 μ m NX-C18 110 Å, LC Column 150 x 4.6 mm, Ea
Dimensions: 150 x 4.6 mm ID
Order No: 00F-4453-E0
Elution Type: Isocratic
Eluent A: Phosphoric Acid and Water (0.1:99.9, v/v)
Eluent B: Acetonitrile and Mobile phase A (50:50, v/v)
Gradient

Step No.	Time (min)	Pct A	Pct B
1	10	55	45

Profile:
Flow Rate: 1.75 mL/min
Col. Temp.: 40 °C
Detection: LC/UV (DAD, PDA) @ 230.000000000 nm (nanometers) (ambient)



Products used in this application:



ANALYTES:

- 1 Labetalol
Retention Time: 1.883 min