

HPLC Application

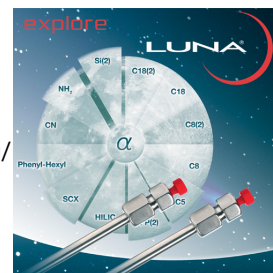
ID No.: 27878

USP Tigecycline Assay System Suitability Solution on Luna 5u C18(2) 150x4.6mm using Agilent 1260 Quaternary

Column: Luna® 5 µm C18(2) 100 Å, LC Column 150 x 4.6 mm, Ea
Dimensions: 150 x 4.6 mm ID
Order No: 00F-4252-E0
Elution Type: Isocratic
Eluent A: Acetonitrile:Buffer (140:860) Buffer: 4.35g/L of dibasic Potassium Phosphate and 0.93 g/
Gradient

Step No.	Time (min)	Pct A
1	45	100

Profile:
Flow Rate: 1 mL/min
Col. Temp.: 30 °C
Detection: UV-Vis Abs.-Diode Array (PDA) @ 248.000000000 nm (nanometers) (ambient)



Phosphori

Products used in this application:



ANALYTES:

- 1 Tigecycline Epimer
Retention Time: 8.253 min
- 2 Tigecycline
Retention Time: 12.766 min

