

HPLC Application

ID No.: 3280

Cephalexin

Column: Luna® 5 µm C18(2) 100 Å, LC Column 250 x 4.6 mm, Ea

Dimensions: 250 x 4.6 mm ID

Order No: 00G-4252-E0

Elution Type: Isocratic

Eluent A: Water:ACN:MeOH:Triethylamine (850:100:50:15) with 5mM 1-Pentanesulfonic acid

Gradient	Step No.	Time (min)	Pct A
Profile:	1	0	100

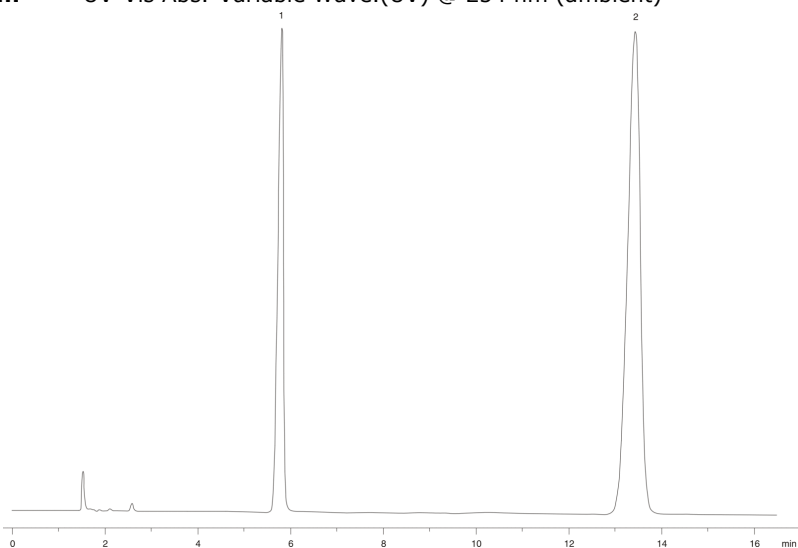
Flow Rate: 1.5 mL/min

Col. Temp.: ambient

Detection: UV-Vis Abs.-Variable Wave.(UV) @ 254 nm (ambient)



Products used in this application:



ANALYTES:

- 1 1-Hydroxybenzotriazole
- 2 Cephalexin

