

HPLC Application

ID No.: 3284

Atenolol injection

Column: Luna® 5 µm C18(2) 100 Å, LC Column 250 x 4.6 mm, Ea

Dimensions: 250 x 4.6 mm ID

Order No: 00G-4252-E0

Elution Type: Isocratic

Eluent A: ACN

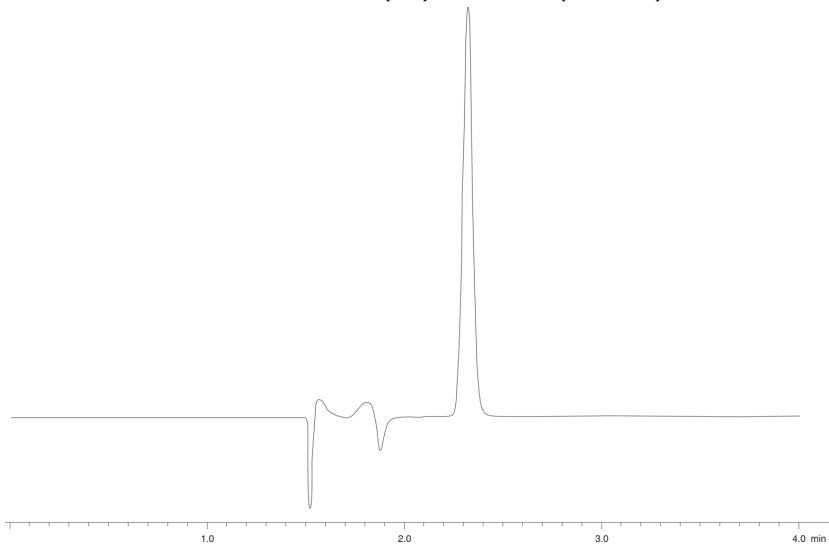
Eluent B: 5mM 1-Octanesulfonic acid in 38mM Sulfuric acid

Gradient Profile:	Step No.	Time (min)	Pct A	Pct B
	1	0	75	25

Flow Rate: 1.7 mL/min

Col. Temp.: ambient

Detection: UV-Vis Abs.-Variable Wave.(UV) @ 275 nm (ambient)



ANALYTES:

1 Atenolol



Products used in this application:

