

# HPLC Application

ID No.: 3286

## Atenolol

**Column:** Luna® 5 µm C18(2) 100 Å, LC Column 150 x 4.6 mm, Ea

**Dimensions:** 150 x 4.6 mm ID

**Order No:** 00F-4252-E0

**Elution Type:** Isocratic

**Eluent A:** Methanol

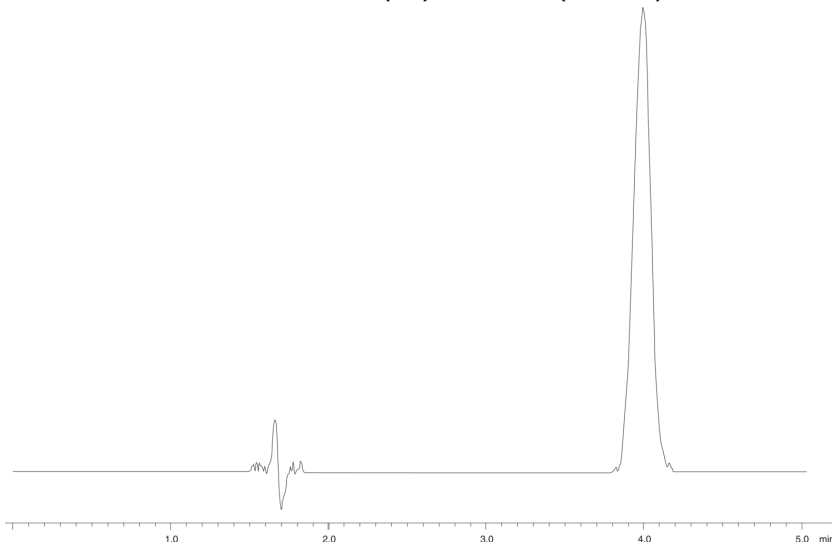
**Eluent B:** 5mM Dibasic sodium phosphate with 7mM 1-heptanesulfonate

Gradient Profile:	Step No.	Time (min)	Pct A	Pct B
	1	0	30	70

**Flow Rate:** 0.9 mL/min

**Col. Temp.:** ambient

**Detection:** UV-Vis Abs.-Variable Wave.(UV) @ 226 nm (ambient)



### ANALYTES:

1 Atenolol



Products used in this application:

