

HPLC Application

ID No.: 3305

Water-soluble vitamins

Column: Luna® 5 µm C18(2) 100 Å, LC Column 150 x 4.6 mm, Ea

Dimensions: 150 x 4.6 mm ID

Order No: 00F-4252-E0

Elution Type: Isocratic

Eluent A: 20mM Potassium phosphate

Eluent B: ACN

Gradient Profile:	Step No.	Time (min)	Pct A	Pct B
	1	0	95	5

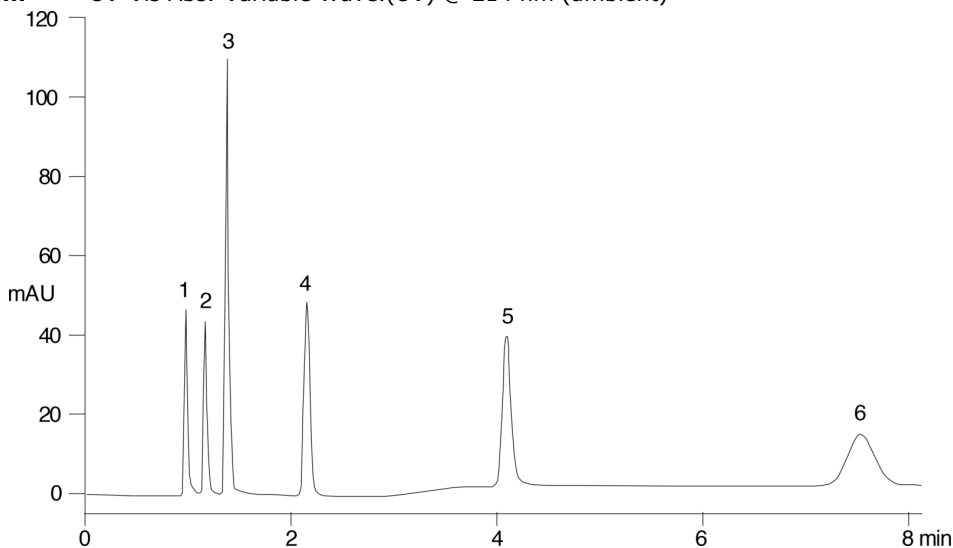
Flow Rate: 1.5 mL/min

Col. Temp.: ambient

Detection: UV-Vis Abs.-Variable Wave.(UV) @ 214 nm (ambient)



Products used in this application:



ANALYTES:

- 1 Thiamine
- 2 Cyanocobalamine (Vitamin B12)
- 3 Ascorbic acid
- 4 Pantothenic acid
- 5 Niacinamide
- 6 paraaminobenzoic acid

