

HPLC Application

ID No.: 3471

Phthalate Esters

Column: Luna[®] 5 μ m CN 100 Å, LC Column 150 x 4.6 mm, Ea

Dimensions: 150 x 4.6 mm ID

Order No: 00F-4255-E0

Elution Type: Isocratic

Eluent A: Hexane

Eluent B: Methylene chloride/methanol (80:20)

Gradient Profile:	Step No.	Time (min)	Pct A	Pct B
	1	0	99	1

Flow Rate: 1 mL/min

Col. Temp.: ambient

Detection: UV-Vis Abs.-Variable Wave.(UV) @ 254 nm (ambient)

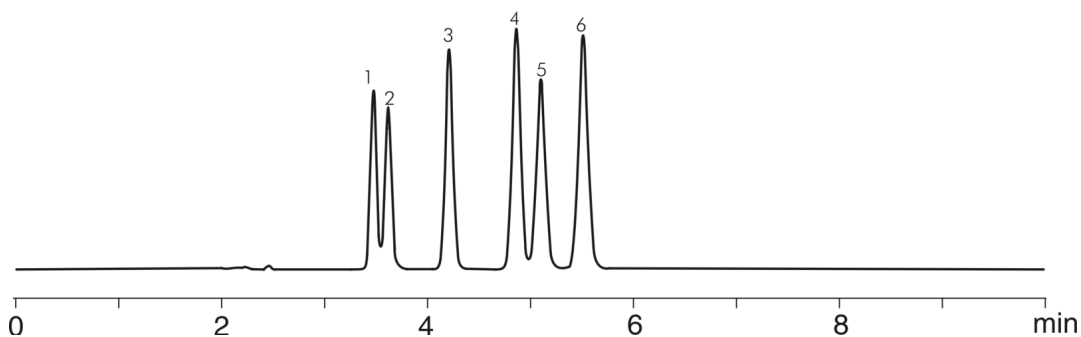
Analyst Note: SecurityGuard[™] Guard Cartridge System extends column lifetime.

- SecurityGuard Cartridges, CN 4 x 3.0mm, 10/Pk Part No.: AJ0-4305

- Holder Part No.: KJ0-4282



Products used in this application:



ANALYTES:

- 1 Di-n-octyl phthalate
- 2 Bis(2-Ethylhexyl)phthalate
- 3 Butylbenzyl phthalate
- 4 Di-n-butyl phthalate
- 5 Diethyl phthalate
- 6 Dimethyl phthalate

