

## Aromatic Amines - Bondclone vs. $\mu$ Bondapak Comparison

**Column:** Bondclone™ 10  $\mu$ m C18 148 Å, LC Column 300 x 3.9 mm, Ea

**Dimensions:** 300 x 3.9 mm ID

**Order No:** 00H-2117-C0

**Elution Type:** Isocratic

**Eluent A:** Acetonitrile

**Eluent B:** Water

Gradient Profile:	Step No.	Time (min)	Pct A	Pct B
	1	0	65	35

**Flow Rate:** 1.5 mL/min

**Col. Temp.:** ambient

**Detection:** UV-Vis Abs.-Variable Wave.(UV) @ 254 nm (ambient)

**Analyst Note:** SecurityGuard™ Guard Cartridge System extends column lifetime.

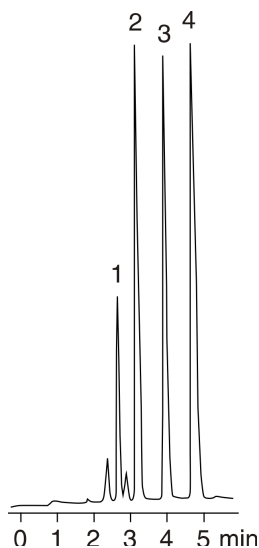
- SecurityGuard Cartridges, C18 4 x 3.0mm, 10/Pk Part No.: AJ0-4287

- Holder Part No.: KJ0-4282



Products used in this application:

# Bondclone™



### ANALYTES:

1 Amine mix

