

# HPLC Application

ID No.: 5359

## RNA Fragments

**Column:** Jupiter<sup>®</sup> 5  $\mu$ m C4 300 Å, LC Column 250 x 4.6 mm, Ea

**Dimensions:** 250 x 4.6 mm ID

**Order No:** 00G-4167-E0

**Elution Type:** Gradient

**Eluent A:** 0.1 M K3PO4 in 0.75% isopropanol, pH 6.8

**Eluent B:** 1.0 M (NH4)SO4 + 0.1M K3PO4 in 0.75% isopropanol, pH 6.8

<b>Gradient Profile:</b>	<b>Step No.</b>	<b>Time (min)</b>	<b>Pct A</b>	<b>Pct B</b>
	<b>1</b>	0	0	100
	<b>2</b>	20	70	30
	<b>3</b>	30	100	0

**Flow Rate:** 1 mL/min

**Col. Temp.:** ambient

**Detection:** UV-Vis Abs.-Variable Wave.(UV) @ 260 nm (ambient)

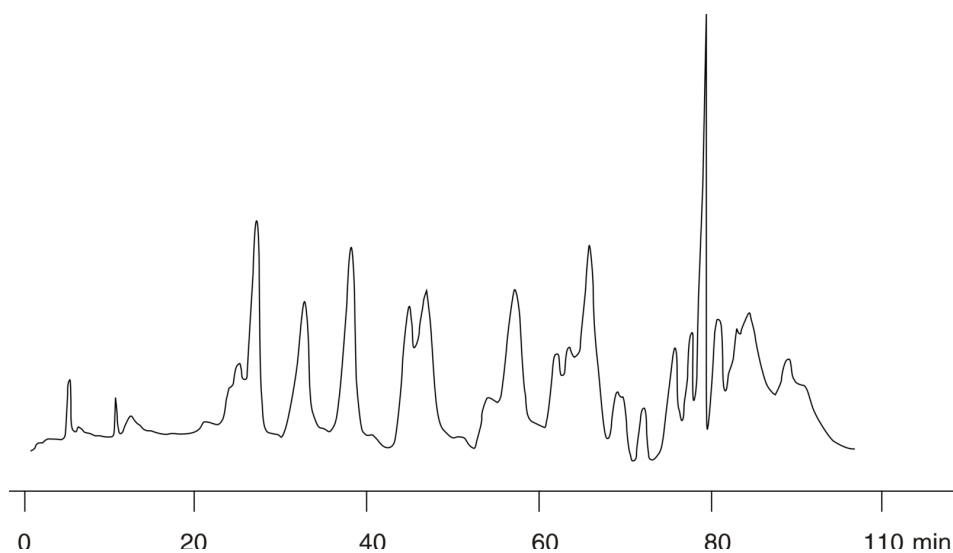
**Analyst Note:** SecurityGuard<sup>™</sup> Guard Cartridge System extends column lifetime.

- SecurityGuard Cartridges, Widedpore C4 4 x 3.0mm, 10/Pk Part No.: AJ0-4330

- Holder Part No.: KJ0-4282



Products used in this application:



### ANALYTES:

- 1 tRNA fragment

