

Proteins II

Column: Jupiter® 5 µm C4 300 Å, LC Column 50 x 4.6 mm, Ea

Dimensions: 50 x 4.6 mm ID

Order No: 00B-4167-E0

Elution Type: Gradient

Eluent A: 0.1% TFA in water

Eluent B: 0.1% TFA in acetonitrile

Gradient Profile:	Step No.	Time (min)	Pct A	Pct B
	1	0	100	0
	2	1	80	20
	3	2.5	65	35
	4	4	53.5	46.5
	5	6	53.5	46.5

Flow Rate: 1 mL/min

Col. Temp.: ambient

Detection: UV-Vis Abs.-Variable Wave.(UV) @ 220 nm (ambient)

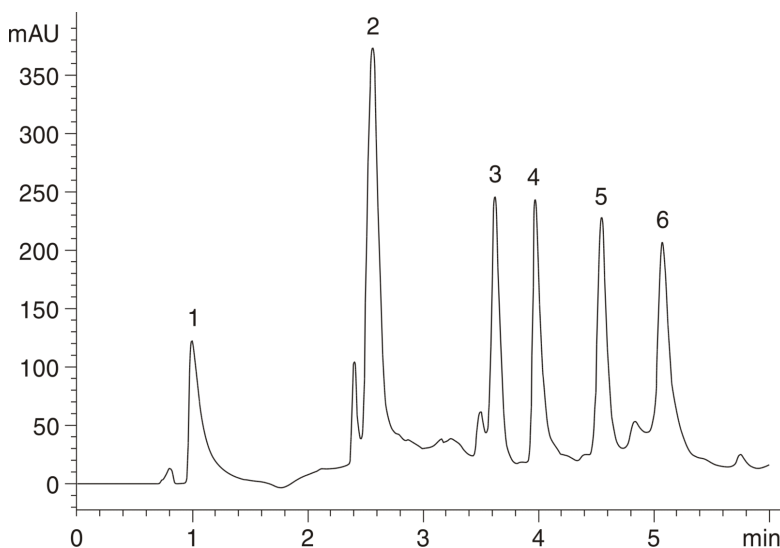
Analyst Note: SecurityGuard™ Guard Cartridge System extends column lifetime.

- SecurityGuard Cartridges, Widedpore C4 4 x 3.0mm, 10/Pk Part No.: AJ0-4330

- Holder Part No.: KJ0-4282



Products used in this application:



ANALYTES:

- 1 Alkaline phosphatase
- 2 Cyanocobalamin
- 3 RNase
- 4 Insulin
- 5 Transferrin
- 6 Trypsin inhibitor

