

Total Ion Chromatograms

Column: Jupiter® 5 µm C18 300 Å, LC Column 250 x 2 mm, Ea

Dimensions: 250 x 2 mm ID

Order No: 00G-4053-B0

Elution Type: Gradient

Eluent A: 0.1% TFA in water

Eluent B: 0.1% TFA in acetonitrile

Gradient Profile:	Step No.	Time (min)	Pct A	Pct B
	1	0	95	5
	2	60	5	95

Flow Rate: 0.2 mL/min

Col. Temp.: ambient

Detection: Unknown @ nm (ambient)

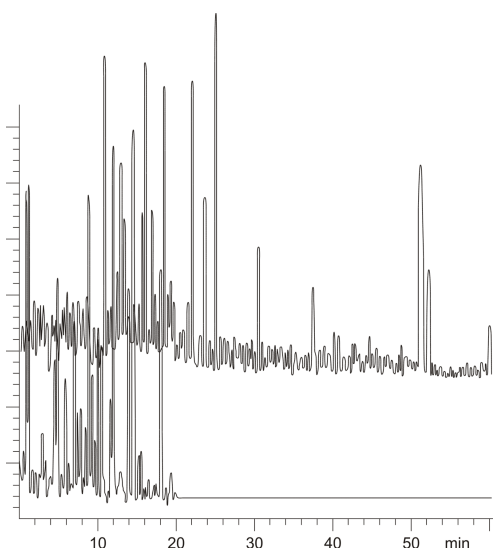
Analyst Note: SecurityGuard™ Guard Cartridge System extends column lifetime.

- SecurityGuard Cartridges, Widedpore C18 4 x 2.0mm, 10/Pk Part No.: AJ0-4320

- Holder Part No.: KJ0-4282



Products used in this application:



ANALYTES:

- 1 Cytochrome c
- 2 Bovine Serum Albumin (BSA)
- 3 Myoglobin

