

## Mass Spectra of Cytochrome c Peak

**Column:** Jupiter® 5 µm C18 300 Å, LC Column 250 x 2 mm, Ea

**Dimensions:** 250 x 2 mm ID

**Order No:** 00G-4053-B0

**Elution Type:** Gradient

**Eluent A:** 0.1% TFA in water

**Eluent B:** 0.1% TFA in acetonitrile

Gradient Profile:	Step No.	Time (min)	Pct A	Pct B
	1	0	95	5
	2	60	5	95

**Flow Rate:** 0.2 mL/min

**Col. Temp.:** ambient

**Detection:** Unknown @ nm (ambient)

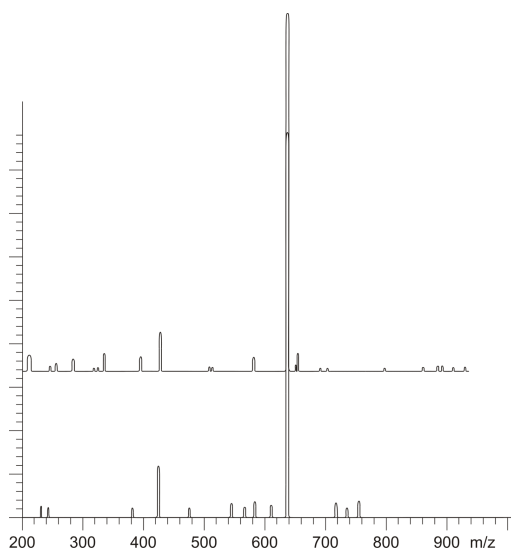
**Analyst Note:** SecurityGuard™ Guard Cartridge System extends column lifetime.

- SecurityGuard Cartridges, Widepore C18 4 x 2.0mm, 10/Pk Part No.: AJ0-4320

- Holder Part No.: KJ0-4282



Products used in this application:



### ANALYTES:

- 1 Cytochrome c
- 2 Bovine Serum Albumin (BSA)
- 3 Myoglobin

